

Product datasheet for **TA331193**

CHES1 (FOXN3) Rabbit Polyclonal Antibody

Product data:

Product Type:	Primary Antibodies
Applications:	WB
Recommended Dilution:	WB
Reactivity:	Human
Host:	Rabbit
Isotype:	IgG
Clonality:	Polyclonal
Immunogen:	The immunogen for anti-FOXN3 antibody: synthetic peptide directed towards the middle region of human FOXN3. Synthetic peptide located within the following region: HKKRQHFAKARKVPSDTLPLKKRRTEKPPESDDEEMKEAAGSLLHLAGIR
Formulation:	Liquid. Purified antibody supplied in 1x PBS buffer with 0.09% (w/v) sodium azide and 2% sucrose. <i>Note that this product is shipped as lyophilized powder to China customers.</i>
Conjugation:	Unconjugated
Storage:	Store at -20°C as received.
Stability:	Stable for 12 months from date of receipt.
Predicted Protein Size:	51 kDa
Gene Name:	forkhead box N3
Database Link:	NP_005188 Entrez Gene 1112 Human O00409



[View online »](#)

Background:

FOXN3 gene is a member of the forkhead/winged helix transcription factor family. Checkpoints are eukaryotic DNA damage-inducible cell cycle arrests at G1 and G2. Checkpoint suppressor 1 suppresses multiple yeast checkpoint mutations including mec1, rad9, rad53 and dun1 by activating a MEC1-independent checkpoint pathway. Alternative splicing is observed at the locus, resulting in distinct isoforms. This gene is a member of the forkhead/winged helix transcription factor family. Checkpoints are eukaryotic DNA damage-inducible cell cycle arrests at G1 and G2. Checkpoint suppressor 1 suppresses multiple yeast checkpoint mutations including mec1, rad9, rad53 and dun1 by activating a MEC1-independent checkpoint pathway. Alternative splicing is observed at the locus, resulting in distinct isoforms.

Synonyms:

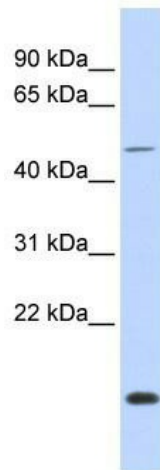
C14orf116; CHES1; PRO1635

Note:

Pig: 100%; Rat: 100%; Horse: 100%; Human: 100%; Mouse: 100%; Guinea pig: 100%; Dog: 92%; Rabbit: 77%

Protein Families:

Druggable Genome, Transcription Factors

Product images:

WB Suggested Anti-FOXN3 Antibody Titration:
0.2-1 ug/ml; ELISA Titer: 1:312500; Positive
Control: HeLa cell lysate