

Product datasheet for **TA331190**

ALF (GTF2A1L) Rabbit Polyclonal Antibody

Product data:

Product Type:	Primary Antibodies
Applications:	WB
Recommended Dilution:	WB
Reactivity:	Human
Host:	Rabbit
Isotype:	IgG
Clonality:	Polyclonal
Immunogen:	The immunogen for anti-ALF antibody: synthetic peptide directed towards the N terminal of human ALF. Synthetic peptide located within the following region: VIPAGRTLPSFTTAELGTSNSSANFTFPGYPIHVPAGVTLQTVSGHLYKV
Formulation:	Liquid. Purified antibody supplied in 1x PBS buffer with 0.09% (w/v) sodium azide and 2% sucrose. <i>Note that this product is shipped as lyophilized powder to China customers.</i>
Conjugation:	Unconjugated
Storage:	Store at -20°C as received.
Stability:	Stable for 12 months from date of receipt.
Predicted Protein Size:	50 kDa
Gene Name:	general transcription factor IIA subunit 1 like
Database Link:	NP_006863 Entrez Gene 11036 Human Q9UNN4
Background:	The assembly and stability of the RNA polymerase II transcription pre-initiation complex on a eukaryotic core promoter involve the effects of TFIIA on the interaction between TATA-binding protein (TBP) and DNA. This gene encodes a germ cell-specific counterpart of the large (alpha/beta) subunit of general transcription factor TFIIA that is able to stabilize the binding of TBP to DNA and may be uniquely important to testis biology.
Synonyms:	ALF



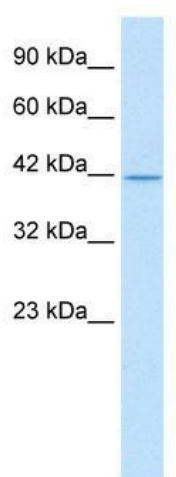
[View online »](#)

Note: Rat: 100%; Horse: 100%; Human: 100%; Dog: 92%; Bovine: 92%; Rabbit: 91%; Pig: 83%; Guinea pig: 83%

Protein Families: Transcription Factors

Protein Pathways: Basal transcription factors

Product images:



WB Suggested Antibody Titration: 0.2-1 ug/ml;
Positive Control: Jurkat