

Product datasheet for **TA331185**

MRG15 (MORF4L1) Rabbit Polyclonal Antibody

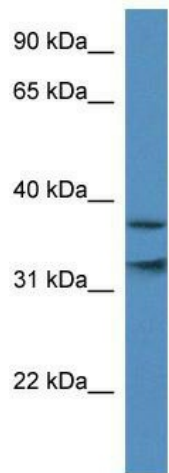
Product data:

Product Type:	Primary Antibodies
Applications:	WB
Recommended Dilution:	WB
Reactivity:	Human
Host:	Rabbit
Isotype:	IgG
Clonality:	Polyclonal
Immunogen:	The immunogen for anti-MORF4L1 antibody: synthetic peptide directed towards the N terminal of human MORF4L1. Synthetic peptide located within the following region: KDKQVKYFIHYSGWNKNWDEWVPEsrVLKYVDtNLQKQRELQKANQEYQA
Formulation:	Liquid. Purified antibody supplied in 1x PBS buffer with 0.09% (w/v) sodium azide and 2% sucrose. <i>Note that this product is shipped as lyophilized powder to China customers.</i>
Conjugation:	Unconjugated
Storage:	Store at -20°C as received.
Stability:	Stable for 12 months from date of receipt.
Predicted Protein Size:	37 kDa
Gene Name:	mortality factor 4 like 1
Database Link:	NP_006782 Entrez Gene 10933 Human Q9UBU8
Background:	MORF4L1 is a novel chromodomain protein that is present in two distinct multiprotein complexes involved in transcriptional activation.
Synonyms:	Eaf3; FWP006; HsT17725; MEAF3; MORFRG15; MRG15; S863-6
Note:	Dog: 100%; Pig: 100%; Rat: 100%; Horse: 100%; Human: 100%; Mouse: 100%; Bovine: 100%; Rabbit: 100%; Guinea pig: 100%; Zebrafish: 86%
Protein Families:	Transcription Factors

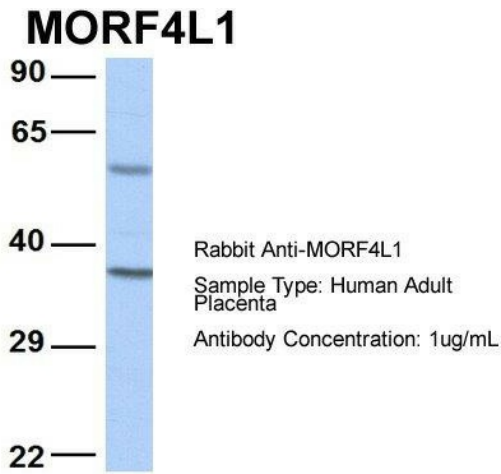


[View online »](#)

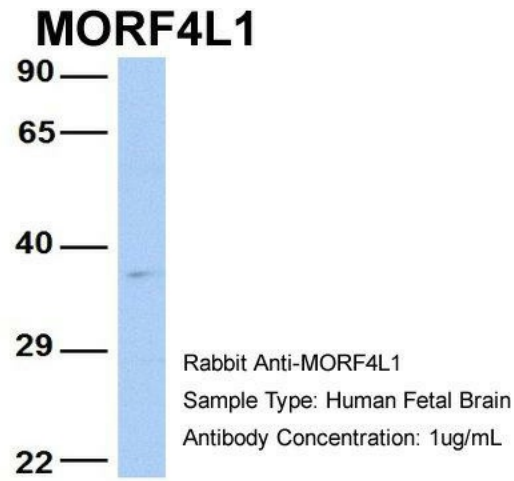
Product images:



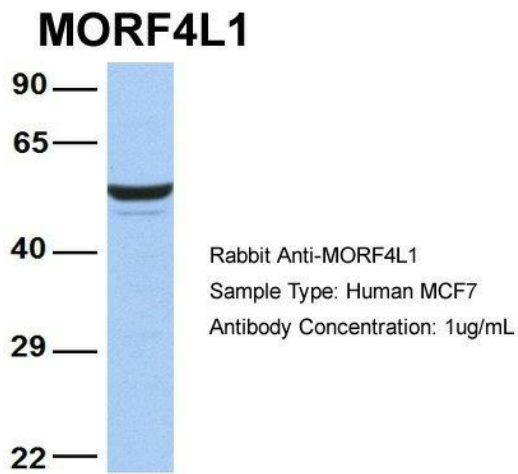
WB Suggested Anti-MORF4L1 Antibody Titration: 0.2-1 ug/ml; ELISA Titer: 1:500; Positive Control: Human Placenta



Host: Rabbit; Target Name: MORF4L1; Sample Tissue: Human Adult Placenta; Antibody Dilution: 1.0ug/ml



Host: Rabbit; Target Name: MORF4L1; Sample Tissue: Human Fetal Brain; Antibody Dilution: 1.0ug/ml



Host: Rabbit; Target Name: MORF4L1; Sample Tissue: MCF7; Antibody Dilution: 1.0ug/ml; MORF4L1 is strongly supported by BioGPS gene expression data to be expressed in Human MCF7 cells