

## Product datasheet for **TA331183**

### TRAFD1 Rabbit Polyclonal Antibody

#### Product data:

Product Type:	Primary Antibodies
Applications:	IHC, WB
Recommended Dilution:	WB, IHC
Reactivity:	Human
Host:	Rabbit
Isotype:	IgG
Clonality:	Polyclonal
Immunogen:	The immunogen for anti-TRAFD1 antibody: synthetic peptide directed towards the C terminal of human TRAFD1. Synthetic peptide located within the following region: TATNHVTEGIPRLDSQPQETSPELPRRRVRHQGDLSSGYLDDTKQETANG
Formulation:	Liquid. Purified antibody supplied in 1x PBS buffer with 0.09% (w/v) sodium azide and 2% sucrose. <i>Note that this product is shipped as lyophilized powder to China customers.</i>
Conjugation:	Unconjugated
Storage:	Store at -20°C as received.
Stability:	Stable for 12 months from date of receipt.
Predicted Protein Size:	65 kDa
Gene Name:	TRAF-type zinc finger domain containing 1
Database Link:	<a href="#">NP_006691</a> <a href="#">Entrez Gene 10906 Human</a> <a href="#">O14545</a>
Background:	TRAFD1 is a new candidate transcription factor.
Synonyms:	FLN29
Note:	Human: 100%; Pig: 93%; Guinea pig: 93%; Dog: 86%; Rat: 86%; Horse: 86%; Rabbit: 86%; Mouse: 85%; Bovine: 79%

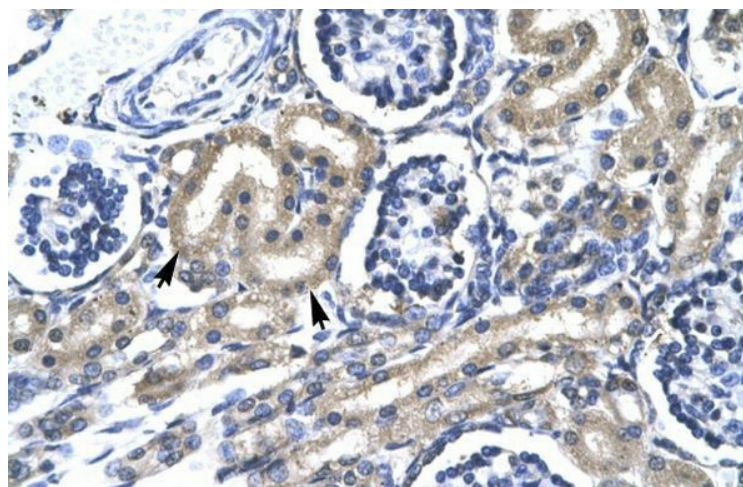


[View online »](#)

## Product images:



WB Suggested Anti-TRAFD1 Antibody Titration: 0.2-1 ug/ml; Positive Control: Raji cell lysate  
TRAFD1 is strongly supported by BioGPS gene expression data to be expressed in Human Raji cells



Human kidney