

## Product datasheet for **TA331177**

### LBX1 Rabbit Polyclonal Antibody

#### Product data:

Product Type:	Primary Antibodies
Applications:	WB
Recommended Dilution:	WB
Reactivity:	Human
Host:	Rabbit
Isotype:	IgG
Clonality:	Polyclonal
Immunogen:	The immunogen for anti-LBX1 antibody: synthetic peptide directed towards the middle region of human LBX1. Synthetic peptide located within the following region: LPLAGRALLSQTSPLELASKTFKGLEVSVLQAAEGRDGMTIFGQRQ
Formulation:	Liquid. Purified antibody supplied in 1x PBS buffer with 0.09% (w/v) sodium azide and 2% sucrose. <i>Note that this product is shipped as lyophilized powder to China customers.</i>
Purification:	Affinity Purified
Conjugation:	Unconjugated
Storage:	Store at -20°C as received.
Stability:	Stable for 12 months from date of receipt.
Predicted Protein Size:	30 kDa
Gene Name:	ladybird homeobox 1
Database Link:	<a href="#">NP_006553</a> <a href="#">Entrez Gene 10660 Human P52954</a>

**Background:** LBX1 is the transcription factor required for the development of GABAergic interneurons in the dorsal horn of the spinal cord and migration and further development of hypaxial muscle precursor cells for limb muscles, diaphragm and hypoglossal cord. This gene and the orthologous mouse gene were found by their homology to the Drosophila ladybird early and late homeobox genes. In the mouse, this gene is a key regulator of muscle precursor cell migration and is required for the acquisition of dorsal identities of forelimb muscles.



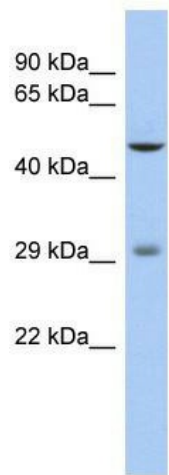
[View online »](#)

**Synonyms:** homeobox; HPX-6; HPX6; LBX1H

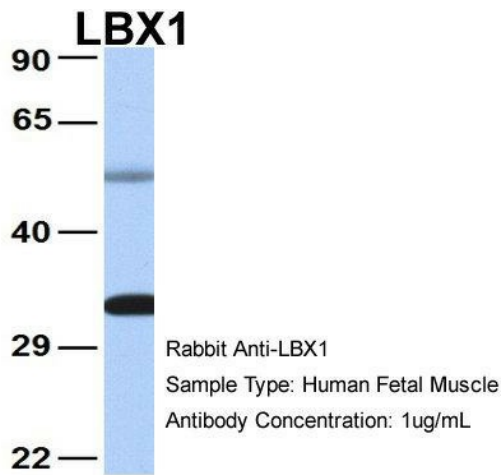
**Note:** Dog: 100%; Pig: 100%; Rat: 100%; Horse: 100%; Human: 100%; Mouse: 100%; Bovine: 100%; Rabbit: 100%; Zebrafish: 100%; Guinea pig: 100%

**Protein Families:** Transcription Factors

**Product images:**

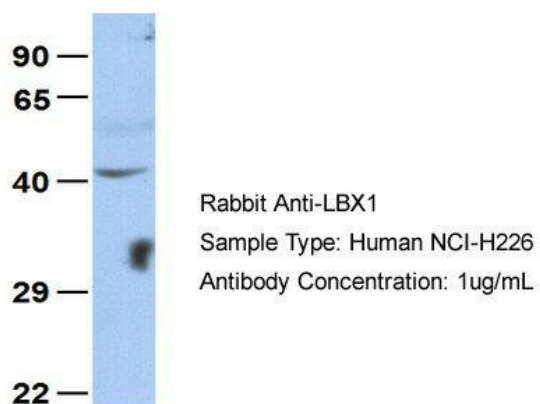


WB Suggested Anti-LBX1 Antibody Titration: 0.2-1 ug/ml; ELISA Titer: 1:1562500; Positive Control: Human Thymus



Host: Rabbit; Target Name: LBX1; Sample Tissue: Human Fetal Muscle; Antibody Dilution: 1.0ug/ml

## LBX1



Host: Rabbit; Target Name: LBX1; Sample Tissue: NCI-H226; Antibody Dilution: 1.0ug/ml; LBX1 is supported by BioGPS gene expression data to be expressed in NCIH226