

## Product datasheet for **TA331175**

### PCK1 Rabbit Polyclonal Antibody

#### Product data:

Product Type:	Primary Antibodies
Applications:	IHC, WB
Recommended Dilution:	WB, IHC
Reactivity:	Human
Host:	Rabbit
Isotype:	IgG
Clonality:	Polyclonal
Immunogen:	The immunogen for anti-PCK1 antibody: synthetic peptide directed towards the middle region of human PCK1. Synthetic peptide located within the following region: NGFFGVAPGTSVKTNPNAIKTIQKNTIFTNVAETSDGGVYWEGIDEPLAS
Formulation:	Liquid. Purified antibody supplied in 1x PBS buffer with 0.09% (w/v) sodium azide and 2% sucrose. <i>Note that this product is shipped as lyophilized powder to China customers.</i>
Conjugation:	Unconjugated
Storage:	Store at -20°C as received.
Stability:	Stable for 12 months from date of receipt.
Predicted Protein Size:	69 kDa
Gene Name:	phosphoenolpyruvate carboxykinase 1
Database Link:	<a href="#">NP_002582</a> <a href="#">Entrez Gene 5105 Human P35558</a>
Background:	PCK1 is a main control point for the regulation of gluconeogenesis. The cytosolic enzyme encoded by this gene, along with GTP, catalyzes the formation of phosphoenolpyruvate from oxaloacetate, with the release of carbon dioxide and GDP. The expression of PCK1 can be regulated by insulin, glucocorticoids, glucagon, cAMP, and diet.
Synonyms:	PEPCK-C; PEPCK1; PEPCKC
Note:	Dog: 100%; Rat: 100%; Horse: 100%; Human: 100%; Mouse: 100%; Bovine: 100%; Pig: 93%; Rabbit: 86%; Guinea pig: 86%

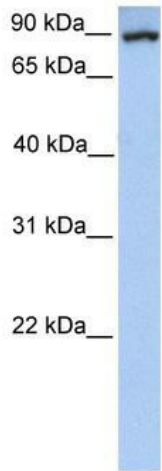


[View online »](#)

**Protein Families:** Druggable Genome

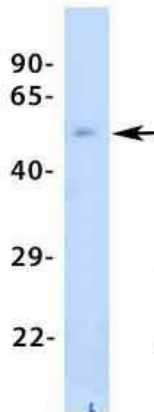
**Protein Pathways:** Adipocytokine signaling pathway, Citrate cycle (TCA cycle), Glycolysis / Gluconeogenesis, Insulin signaling pathway, Metabolic pathways, PPAR signaling pathway, Pyruvate metabolism

**Product images:**



WB Suggested Anti-PCK1 Antibody Titration: 1.0ug/ml; Positive Control: Fetal Brain Lysate

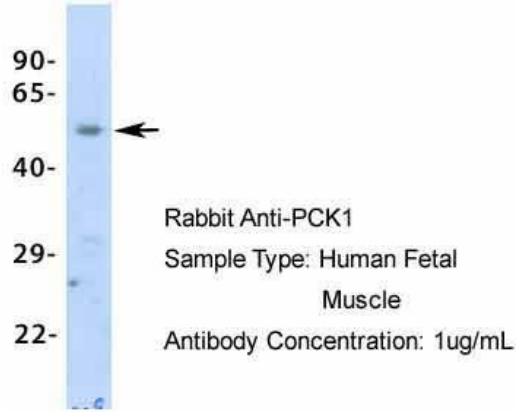
**PCK1**



Rabbit Anti-PCK1  
 Sample Type: Human Adult  
 Placenta  
 Antibody Concentration: 1ug/mL

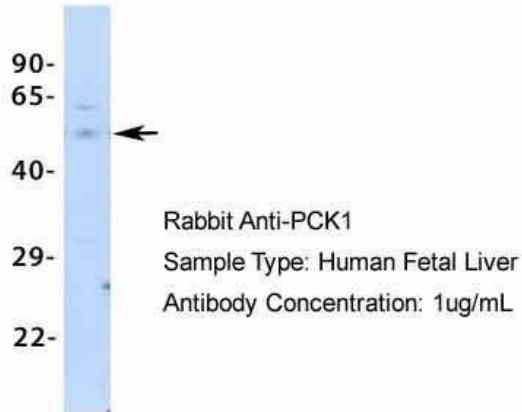
Host: Rabbit; Target Name: PCK1; Sample Tissue: Human Adult Placenta; Antibody Dilution: 1.0ug/ml

### PCK1



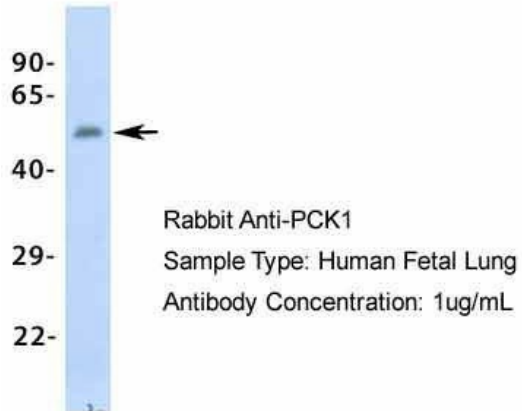
Host: Rabbit; Target Name: PCK1; Sample Tissue: Human Fetal Muscle; Antibody Dilution: 1.0ug/ml

### PCK1



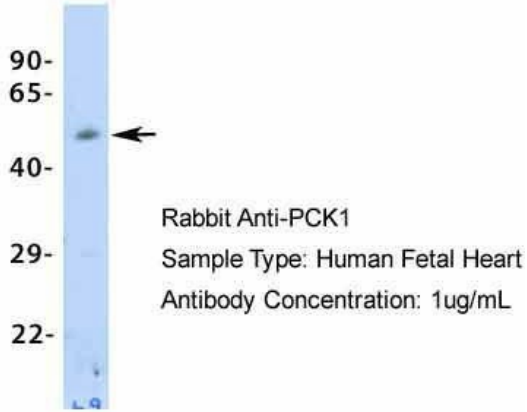
Host: Rabbit; Target Name: PCK1; Sample Tissue: Human Fetal Liver; Antibody Dilution: 1.0ug/ml

### PCK1



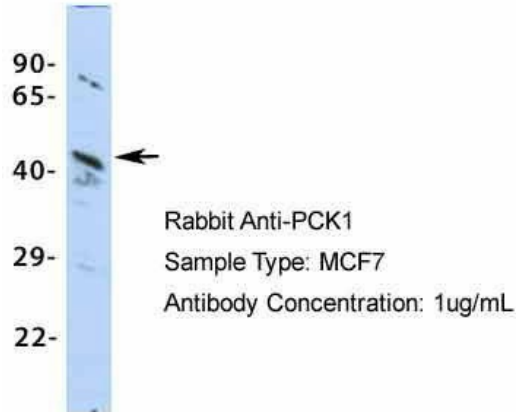
Host: Rabbit; Target Name: PCK1; Sample Tissue: Human Fetal Lung; Antibody Dilution: 1.0ug/ml

### PCK1

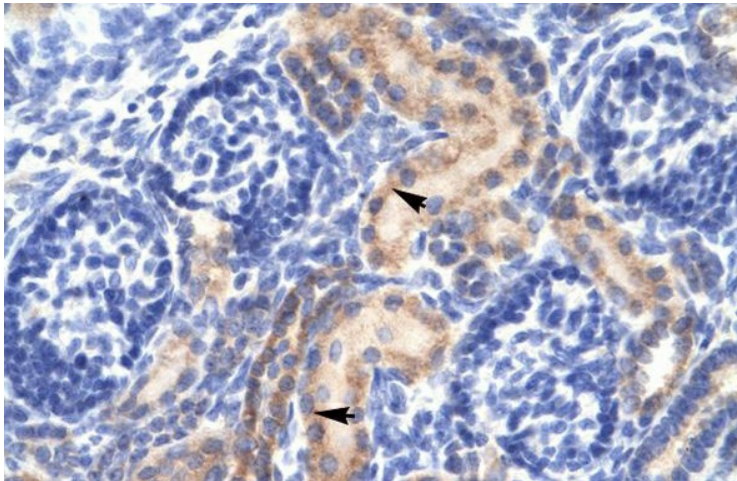


Host: Rabbit; Target Name: PCK1; Sample Tissue: Human Fetal Heart; Antibody Dilution: 1.0ug/ml

### PCK1



Host: Rabbit; Target Name: PCK1; Sample Tissue: MCF7; Antibody Dilution: 1.0ug/ml



Human kidney