

Product datasheet for **TA331174**

PCK1 Rabbit Polyclonal Antibody

Product data:

Product Type:	Primary Antibodies
Applications:	WB
Recommended Dilution:	WB
Reactivity:	Human, Pig
Host:	Rabbit
Isotype:	IgG
Clonality:	Polyclonal
Immunogen:	The immunogen for anti-PCK1 antibody: synthetic peptide directed towards the middle region of human PCK1. Synthetic peptide located within the following region: NGFFGVAPGTSVKTNPNAIKTIQKNTIFTNVAETSDGGVYWEGIDEPLAS
Formulation:	Liquid. Purified antibody supplied in 1x PBS buffer with 0.09% (w/v) sodium azide and 2% sucrose. <i>Note that this product is shipped as lyophilized powder to China customers.</i>
Conjugation:	Unconjugated
Storage:	Store at -20°C as received.
Stability:	Stable for 12 months from date of receipt.
Predicted Protein Size:	69 kDa
Gene Name:	phosphoenolpyruvate carboxykinase 1
Database Link:	NP_002582 Entrez Gene 5105 Human P35558



[View online »](#)

Background:

PCK1 is a main control point for the regulation of gluconeogenesis. The cytosolic enzyme encoded by this gene, along with GTP, catalyzes the formation of phosphoenolpyruvate from oxaloacetate, with the release of carbon dioxide and GDP. The expression of PCK1 can be regulated by insulin, glucocorticoids, glucagon, cAMP, and diet. This gene is a main control point for the regulation of gluconeogenesis. The cytosolic enzyme encoded by this gene, along with GTP, catalyzes the formation of phosphoenolpyruvate from oxaloacetate, with the release of carbon dioxide and GDP. The expression of this gene can be regulated by insulin, glucocorticoids, glucagon, cAMP, and diet. Defects in this gene are a cause of cytosolic phosphoenolpyruvate carboxykinase deficiency. A mitochondrial isozyme of the encoded protein also has been characterized. Publication Note: This RefSeq record includes a subset of the publications that are available for this gene. Please see the Entrez Gene record to access additional publications.

Synonyms:

PEPCK-C; PEPCK1; PEPCKC

Note:

Dog: 100%; Rat: 100%; Horse: 100%; Human: 100%; Mouse: 100%; Bovine: 100%; Pig: 93%; Rabbit: 86%; Guinea pig: 86%

Protein Families:

Druggable Genome

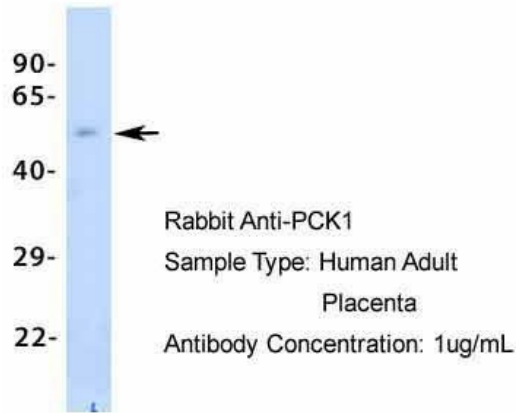
Protein Pathways:

Adipocytokine signaling pathway, Citrate cycle (TCA cycle), Glycolysis / Gluconeogenesis, Insulin signaling pathway, Metabolic pathways, PPAR signaling pathway, Pyruvate metabolism

Product images:

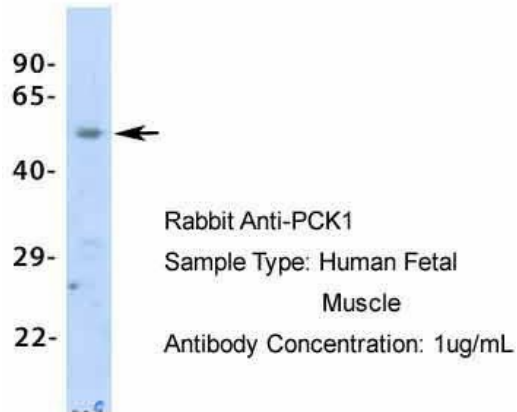
WB Suggested Anti-PCK1 Antibody Titration: 0.2-1 ug/ml; ELISA Titer: 1:1562500; Positive Control: Jurkat cell lysate

PCK1



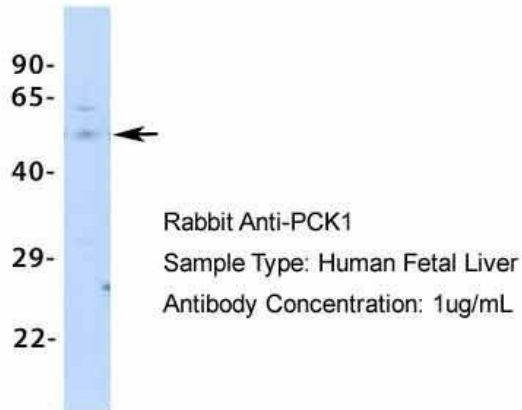
Host: Rabbit; Target Name: PCK1; Sample Tissue: Human Adult Placenta; Antibody Dilution: 1.0ug/ml

PCK1



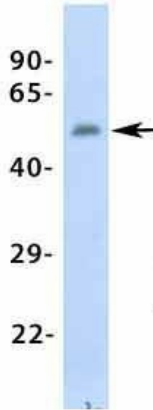
Host: Rabbit; Target Name: PCK1; Sample Tissue: Human Fetal Muscle; Antibody Dilution: 1.0ug/ml

PCK1



Host: Rabbit; Target Name: PCK1; Sample Tissue: Human Fetal Liver; Antibody Dilution: 1.0ug/ml

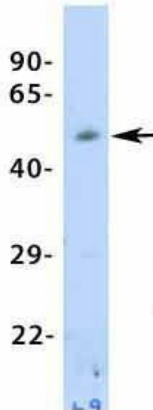
PCK1



Rabbit Anti-PCK1
Sample Type: Human Fetal Lung
Antibody Concentration: 1ug/mL

Host: Rabbit; Target Name: PCK1; Sample Tissue: Human Fetal Lung; Antibody Dilution: 1.0ug/ml

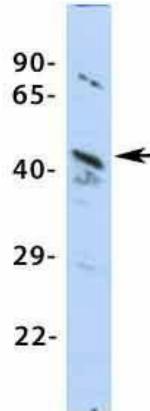
PCK1



Rabbit Anti-PCK1
Sample Type: Human Fetal Heart
Antibody Concentration: 1ug/mL

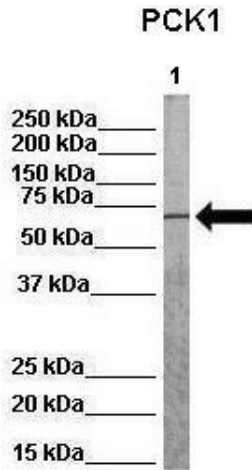
Host: Rabbit; Target Name: PCK1; Sample Tissue: Human Fetal Heart; Antibody Dilution: 1.0ug/ml

PCK1

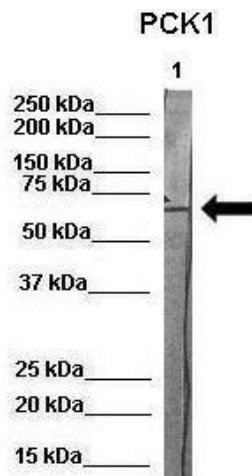


Rabbit Anti-PCK1
Sample Type: MCF7
Antibody Concentration: 1ug/mL

Host: Rabbit; Target Name: PCK1; Sample Tissue: MCF7; Antibody Dilution: 1.0ug/ml



WB Suggested Anti-PCK1 Antibody ; Positive Control: Lane 1: 80ug pig serum; Primary Antibody Dilution : 1:1000; Secondary Antibody : Anti-rabbit-HRP; Secondary Antibody Dilution : 1:1000; Submitted by: Martina Ondrovics, University of Veterinary Medicine V



WB Suggested Anti-PCK1 Antibody ; Positive Control: Lane 1: 80ug pig serum protein; Primary Antibody Dilution : 1:1000; Secondary Antibody : Anti-rabbit-HRP; Secondary Antibody Dilution : 1:500; Submitted by: Martina Ondrovics, University of Veterinary Med