

Product datasheet for **TA331168**

ACADM Rabbit Polyclonal Antibody

Product data:

Product Type:	Primary Antibodies
Applications:	WB
Recommended Dilution:	WB
Reactivity:	Human
Host:	Rabbit
Isotype:	IgG
Clonality:	Polyclonal
Immunogen:	The immunogen for anti-ACADM antibody: synthetic peptide directed towards the N terminal of human ACADM. Synthetic peptide located within the following region: ATARKFAREEIIPVAAEYDKTGEYPVPLIRRAWELGLMNTHIPENCGGLG
Formulation:	Liquid. Purified antibody supplied in 1x PBS buffer with 0.09% (w/v) sodium azide and 2% sucrose. <i>Note that this product is shipped as lyophilized powder to China customers.</i>
Conjugation:	Unconjugated
Storage:	Store at -20°C as received.
Stability:	Stable for 12 months from date of receipt.
Predicted Protein Size:	47 kDa
Gene Name:	acyl-CoA dehydrogenase, C-4 to C-12 straight chain
Database Link:	NP_000007 Entrez Gene 34 Human P11310
Background:	ACADM is the medium-chain specific (C4 to C12 straight chain) acyl-Coenzyme A dehydrogenase. The homotetramer enzyme catalyzes the initial step of the mitochondrial fatty acid beta-oxidation pathway. Clinical phenotypes are associated with ACADM hereditary deficiency.
Synonyms:	ACAD1; MCAD; MCADH
Note:	Dog: 100%; Human: 100%; Pig: 92%; Horse: 92%; Mouse: 92%; Yeast: 92%; Bovine: 92%; Rabbit: 92%; Guinea pig: 85%; Rat: 83%

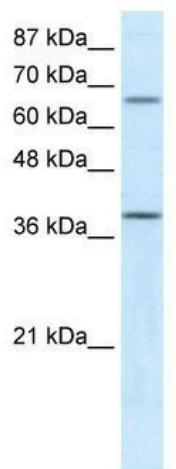


[View online »](#)

Protein Families: Druggable Genome

Protein Pathways: beta-Alanine metabolism, Fatty acid metabolism, Metabolic pathways, PPAR signaling pathway, Propanoate metabolism, Valine, leucine and isoleucine degradation

Product images:



WB Suggested Anti-ACADM Antibody Titration:
5.0ug/ml; Positive Control: HepG2 cell lysate