

Product datasheet for **TA331166**

PDK4 Rabbit Polyclonal Antibody

Product data:

Product Type:	Primary Antibodies
Applications:	IHC, WB
Recommended Dilution:	WB, IHC
Reactivity:	Human
Host:	Rabbit
Isotype:	IgG
Clonality:	Polyclonal
Immunogen:	The immunogen for anti-PDK4 antibody: synthetic peptide directed towards the N terminal of human PDK4. Synthetic peptide located within the following region: MKAARFVLR SAGSLNGAGLVPREVEHFSRYSPLSMKQLLD FGS ENACE
Formulation:	Liquid. Purified antibody supplied in 1x PBS buffer with 0.09% (w/v) sodium azide and 2% sucrose. <i>Note that this product is shipped as lyophilized powder to China customers.</i>
Conjugation:	Unconjugated
Storage:	Store at -20°C as received.
Stability:	Stable for 12 months from date of receipt.
Predicted Protein Size:	46 kDa
Gene Name:	pyruvate dehydrogenase kinase 4
Database Link:	NP_002603 Entrez Gene 5166 Human Q16654



[View online »](#)

Background:

PDK4 is a member of the PDK/BCKDK protein kinase family and is a mitochondrial protein with a histidine kinase domain. This protein is located in the matrix of the mitochondria and inhibits the pyruvate dehydrogenase complex by phosphorylating one of its subunits, thereby contributing to the regulation of glucose metabolism. This gene is a member of the PDK/BCKDK protein kinase family and encodes a mitochondrial protein with a histidine kinase domain. This protein is located in the matrix of the mitochondria and inhibits the pyruvate dehydrogenase complex by phosphorylating one of its subunits, thereby contributing to the regulation of glucose metabolism. Expression of this gene is regulated by glucocorticoids, retinoic acid and insulin.

Synonyms:

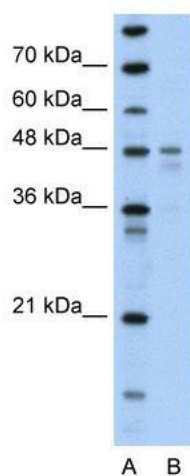
FLJ40832

Note:

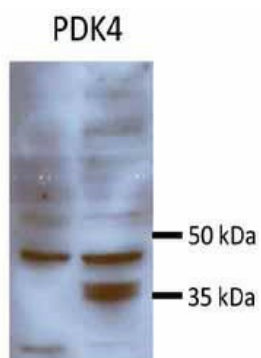
Pig: 100%; Horse: 100%; Human: 100%; Rabbit: 100%; Dog: 92%; Rat: 92%; Mouse: 92%; Bovine: 92%; Guinea pig: 92%

Protein Families:

Druggable Genome, Protein Kinase

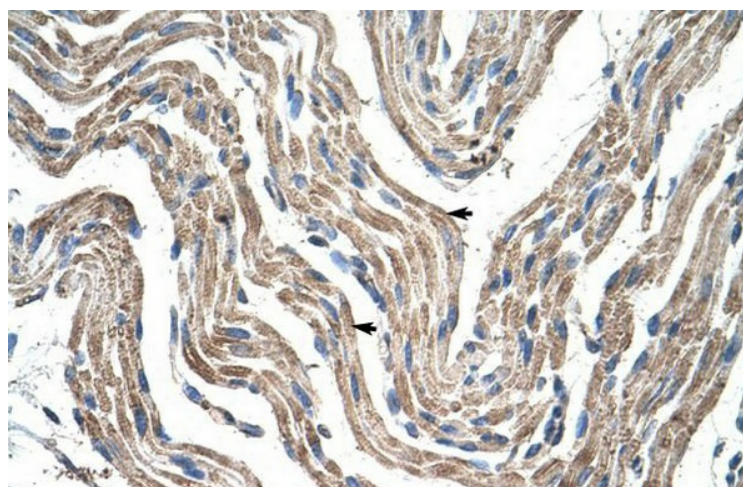
Product images:

WB Suggested Anti-PDK4 Antibody Titration: 0.2-1 ug/ml; Positive Control: Transfected 293T



Sample Type: Huh7 HepG2 (50ug); Primary Antibody Dilution: 1:500 ; Image Submitted By: Partha Kasturi; University of Kansas Medical Center

See Immunoblot 2 for more information.



Human Muscle