

## Product datasheet for **TA331164**

### ACSL1 Rabbit Polyclonal Antibody

#### Product data:

Product Type:	Primary Antibodies
Applications:	IHC, WB
Recommended Dilution:	WB, IHC
Reactivity:	Human
Host:	Rabbit
Isotype:	IgG
Clonality:	Polyclonal
Immunogen:	The immunogen for anti-ACSL1 antibody: synthetic peptide directed towards the C terminal of human ACSL1. Synthetic peptide located within the following region: GSFEELCRNKDVKKAILEDMMVRLGKDSGLKPFQVKGITLHPELFSIDNG
Formulation:	Liquid. Purified antibody supplied in 1x PBS buffer with 0.09% (w/v) sodium azide and 2% sucrose. <i>Note that this product is shipped as lyophilized powder to China customers.</i>
Conjugation:	Unconjugated
Storage:	Store at -20°C as received.
Stability:	Stable for 12 months from date of receipt.
Predicted Protein Size:	78 kDa
Gene Name:	acyl-CoA synthetase long-chain family member 1
Database Link:	<a href="#">NP_001986</a> <a href="#">Entrez Gene 2180 Human</a> <a href="#">P33121</a>

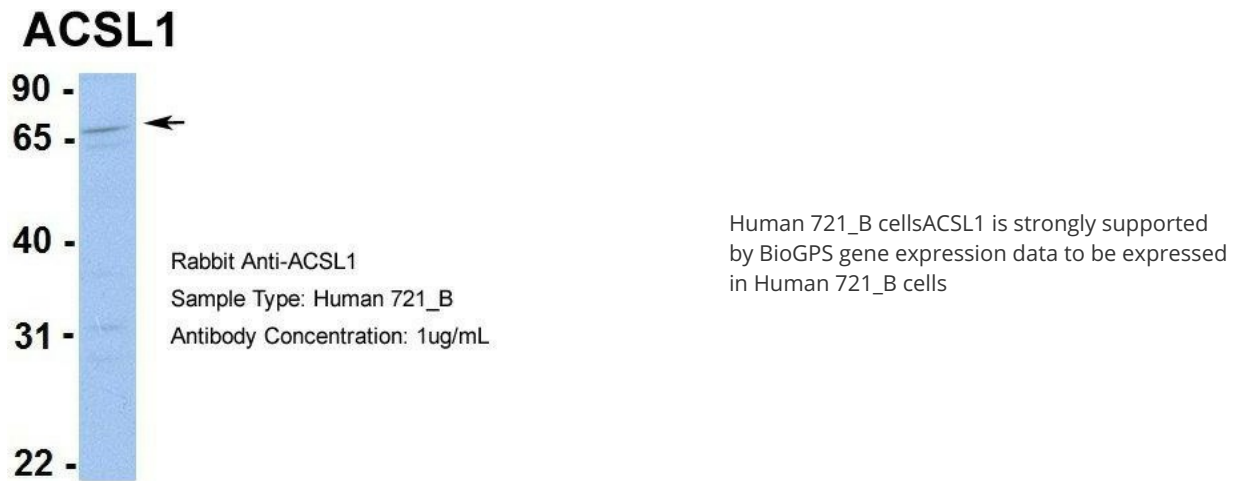
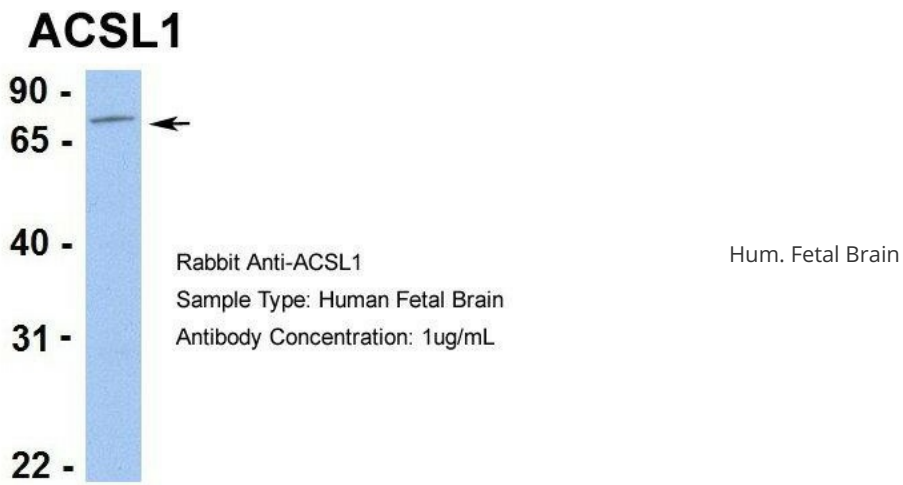
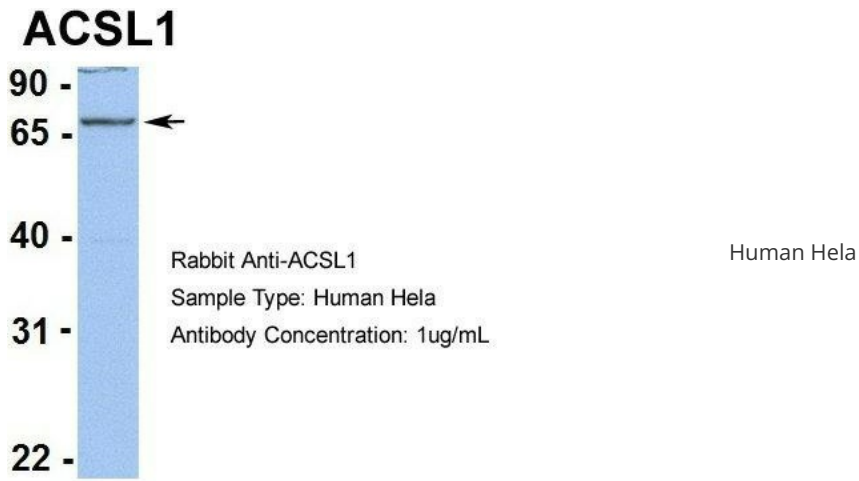


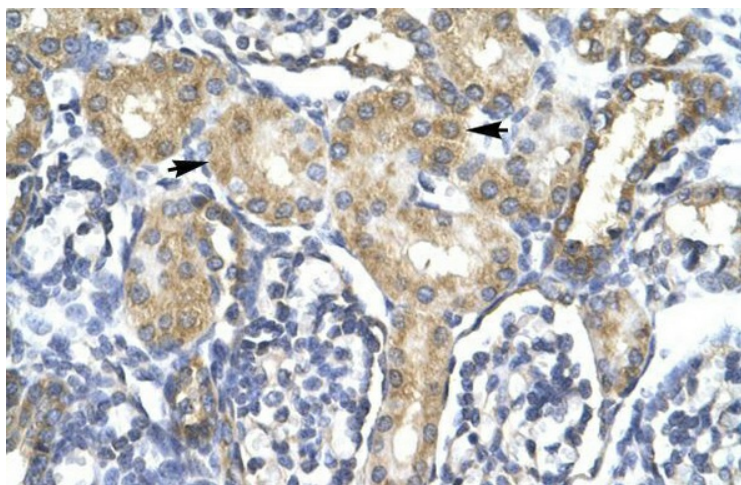
[View online »](#)

<b>Background:</b>	ACSL1 encodes an isozyme of the long-chain fatty-acid-coenzyme A ligase family. Although differing in substrate specificity, subcellular localization, and tissue distribution, all isozymes of this family convert free long-chain fatty acids into fatty acyl-CoA esters, and thereby play a key role in lipid biosynthesis and fatty acid degradation. The protein encoded by this gene is an isozyme of the long-chain fatty-acid-coenzyme A ligase family. Although differing in substrate specificity, subcellular localization, and tissue distribution, all isozymes of this family convert free long-chain fatty acids into fatty acyl-CoA esters, and thereby play a key role in lipid biosynthesis and fatty acid degradation. Publication Note: This RefSeq record includes a subset of the publications that are available for this gene. Please see the Entrez Gene record to access additional publications.
<b>Synonyms:</b>	ACS1; FACL1; FACL2; LACS; LACS1; LACS2
<b>Note:</b>	Rat: 100%; Human: 100%; Mouse: 100%; Dog: 93%; Bovine: 93%; Horse: 85%; Pig: 79%; Zebrafish: 79%; Guinea pig: 79%
<b>Protein Families:</b>	Transmembrane
<b>Protein Pathways:</b>	Adipocytokine signaling pathway, Fatty acid metabolism, Metabolic pathways, PPAR signaling pathway

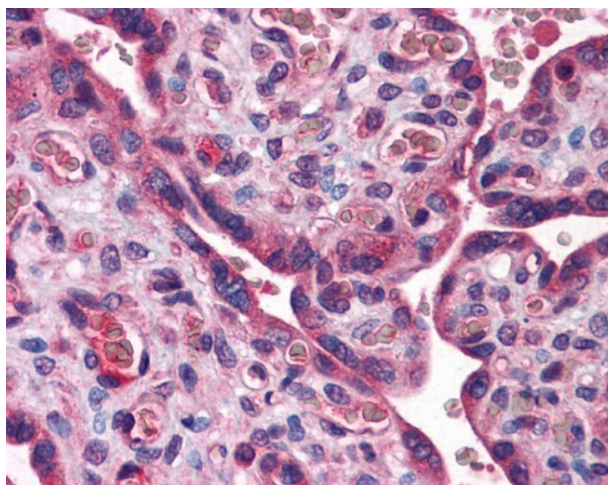
**Product images:**

WB Suggested Anti-ACSL1 Antibody Titration: 0.2-1 ug/ml; ELISA Titer: 1:312500; Positive Control: HepG2 cell lysate





Human kidney



heart, liver, pancreas, brain