

Product datasheet for **TA331160**

MAD4 (MXD4) Rabbit Polyclonal Antibody

Product data:

Product Type:	Primary Antibodies
Applications:	WB
Recommended Dilution:	WB
Reactivity:	Human
Host:	Rabbit
Isotype:	IgG
Clonality:	Polyclonal
Immunogen:	The immunogen for anti-MXD4 antibody: synthetic peptide directed towards the N terminal of human MXD4. Synthetic peptide located within the following region: SLLILLEAAEYLERRDREAHEGYASVLPFDGDFAREKTKAAGLVRKAPNN
Formulation:	Liquid. Purified antibody supplied in 1x PBS buffer with 0.09% (w/v) sodium azide and 2% sucrose. <i>Note that this product is shipped as lyophilized powder to China customers.</i>
Conjugation:	Unconjugated
Storage:	Store at -20°C as received.
Stability:	Stable for 12 months from date of receipt.
Predicted Protein Size:	24 kDa
Gene Name:	MAX dimerization protein 4
Database Link:	NP_006445 Entrez Gene 10608 Human Q14582
Background:	MXD4 is a member of the MAD gene family . The MAD genes encode basic helix-loop-helix-leucine zipper proteins that heterodimerize with MAX protein, forming a transcriptional repression complex. The MAD proteins compete for MAX binding with MYC, which heterodimerizes with MAX forming a transcriptional activation complex. Studies in rodents suggest that the MAD genes are tumor suppressors and contribute to the regulation of cell growth in differentiating tissues.
Synonyms:	bHLHc12; MAD4; MST149; MSTP149

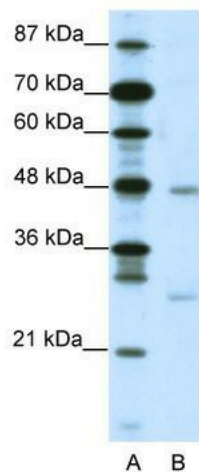


[View online »](#)

Note: Human: 100%; Dog: 93%; Pig: 93%; Sheep: 93%; Bovine: 93%; Rabbit: 93%; Guinea pig: 93%;
Mouse: 86%

Protein Families: Druggable Genome, Transcription Factors

Product images:



WB Suggested Anti-MXD4 Antibody; Titration: 2.5 ug/ml; Positive Control: Jurkat Whole Cell