

Product datasheet for **TA331158**

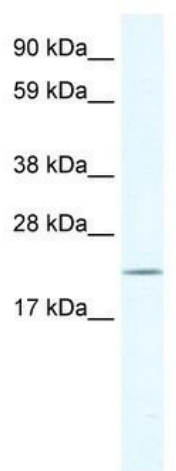
TIP30 (HTATIP2) Rabbit Polyclonal Antibody

Product data:

Product Type:	Primary Antibodies
Applications:	WB
Recommended Dilution:	WB
Reactivity:	Human
Host:	Rabbit
Isotype:	IgG
Clonality:	Polyclonal
Immunogen:	The immunogen for anti-HTATIP2 antibody: synthetic peptide directed towards the N terminal of human HTATIP2. Synthetic peptide located within the following region: FRMQNKSVFILGASGETGRVLLKEILEQGLFSKVTLIGRRKLTDFDEEAYK
Formulation:	Liquid. Purified antibody supplied in 1x PBS buffer with 0.09% (w/v) sodium azide and 2% sucrose. <i>Note that this product is shipped as lyophilized powder to China customers.</i>
Conjugation:	Unconjugated
Storage:	Store at -20°C as received.
Stability:	Stable for 12 months from date of receipt.
Predicted Protein Size:	27 kDa
Gene Name:	HIV-1 Tat interactive protein 2
Database Link:	NP_006401 Entrez Gene 10553 Human Q9BUP3
Background:	The function of Anti-HTATIP2 has not yet been determined.
Synonyms:	CC3; SDR44U1; TIP30
Note:	Pig: 100%; Rat: 100%; Horse: 100%; Human: 100%; Mouse: 100%; Bovine: 100%; Guinea pig: 100%; Dog: 93%; Rabbit: 93%; Zebrafish: 79%
Protein Families:	Druggable Genome



[View online »](#)

Product images:

WB Suggested Anti-HTATIP2 Antibody Titration:
0.2-1 ug/ml; Positive Control: Human Liver