

## Product datasheet for **TA331157**

### TIP30 (HTATIP2) Rabbit Polyclonal Antibody

#### Product data:

Product Type:	Primary Antibodies
Applications:	IHC, WB
Recommended Dilution:	WB, IHC
Reactivity:	Human
Host:	Rabbit
Isotype:	IgG
Clonality:	Polyclonal
Immunogen:	The immunogen for anti-HTATIP2 antibody: synthetic peptide directed towards the N terminal of human HTATIP2. Synthetic peptide located within the following region: TGRVLLKEILEQGLFSKVTLIGRRKLTDFEEAYKNVNQEVD FEKLDDYA
Formulation:	Liquid. Purified antibody supplied in 1x PBS buffer with 0.09% (w/v) sodium azide and 2% sucrose. <i>Note that this product is shipped as lyophilized powder to China customers.</i>
Conjugation:	Unconjugated
Storage:	Store at -20°C as received.
Stability:	Stable for 12 months from date of receipt.
Predicted Protein Size:	27 kDa
Gene Name:	HIV-1 Tat interactive protein 2
Database Link:	<a href="#">NP_006401</a> <a href="#">Entrez Gene 10553 Human</a> <a href="#">Q9BUP3</a>
Background:	CC3 (HTATIP2) is a member of the short-chain dehydrogenases/reductases (SDR) family. It is a novel serine/threonine kinase that phosphorylates the C-terminal domain (CTD) of the largest RNA polymerase II subunit and induces the expression of apoptosis related genes Bad and Siva, as well as metastasis suppressor NM23-H2. It also interacts with an estrogen receptor alpha-interacting coactivator CIA and regulates ERalpha-mediated c-myc transcription.
Synonyms:	CC3; SDR44U1; TIP30



[View online »](#)

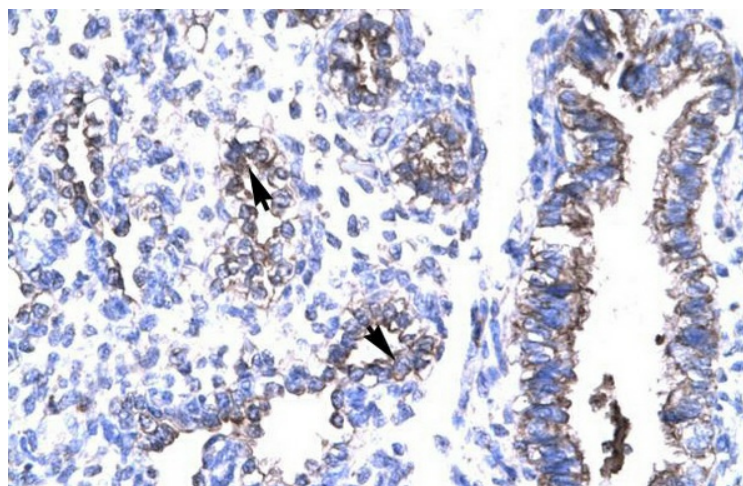
**Note:** Dog: 100%; Pig: 100%; Rat: 100%; Horse: 100%; Human: 100%; Mouse: 100%; Bovine: 100%; Rabbit: 100%; Guinea pig: 100%

**Protein Families:** Druggable Genome

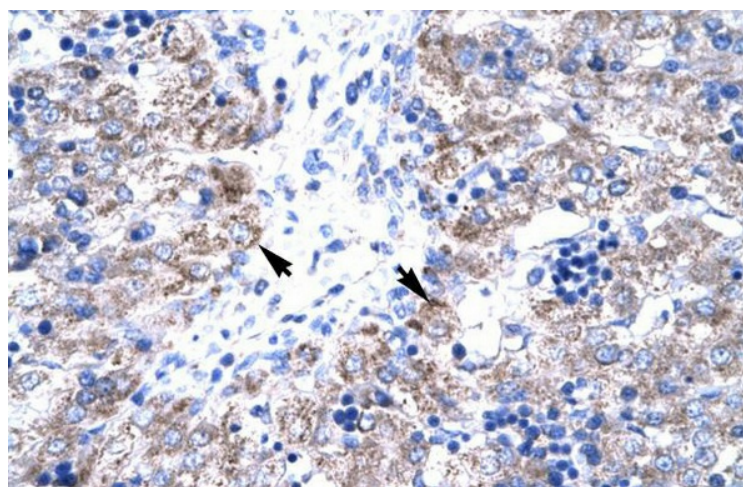
**Product images:**



WB Suggested Anti-HTATIP2 Antibody Titration: 0.5-1.0ug/ml; Positive Control: Jurkat cell lysate



Human Lung



Human Liver