

## Product datasheet for **TA331153**

### CDX4 Rabbit Polyclonal Antibody

#### Product data:

Product Type:	Primary Antibodies
Applications:	IHC, WB
Recommended Dilution:	WB, IHC
Reactivity:	Human
Host:	Rabbit
Isotype:	IgG
Clonality:	Polyclonal
Immunogen:	The immunogen for anti-CDX4 antibody: synthetic peptide directed towards the C terminal of human CDX4. Synthetic peptide located within the following region: KKISQFENSGGSVQSDSDSISPGELPNTFFTTPSAVRGGFQPIEQVIVS
Formulation:	Liquid. Purified antibody supplied in 1x PBS buffer with 0.09% (w/v) sodium azide and 2% sucrose. <i>Note that this product is shipped as lyophilized powder to China customers.</i>
Conjugation:	Unconjugated
Storage:	Store at -20°C as received.
Stability:	Stable for 12 months from date of receipt.
Predicted Protein Size:	30 kDa
Gene Name:	caudal type homeobox 4
Database Link:	<a href="#">NP_005184</a> <a href="#">Entrez Gene 1046 Human O14627</a>
Background:	CDX are homeodomain transcription factors related to the Drosophila caudal gene. The vertebrate CDX have been implicated in the development of the posterior embryo. Several signaling molecules, notably retinoic acid (RA) and members of the Wnt (wingless) and fibroblast growth factor (FGF) families, are also implicated in patterning of the posterior vertebrate embryo. CDX family is the target of Wnt, RA and FGF signaling, suggesting that CDX factors act to convey the activity of these signaling molecules to Hox genes.



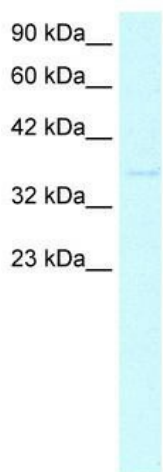
[View online »](#)

**Synonyms:** caudal type homeobox 4; caudal type homeo box transcription factor 4; caudal type homeobox transcription factor 4; OTTHUMP00000023566

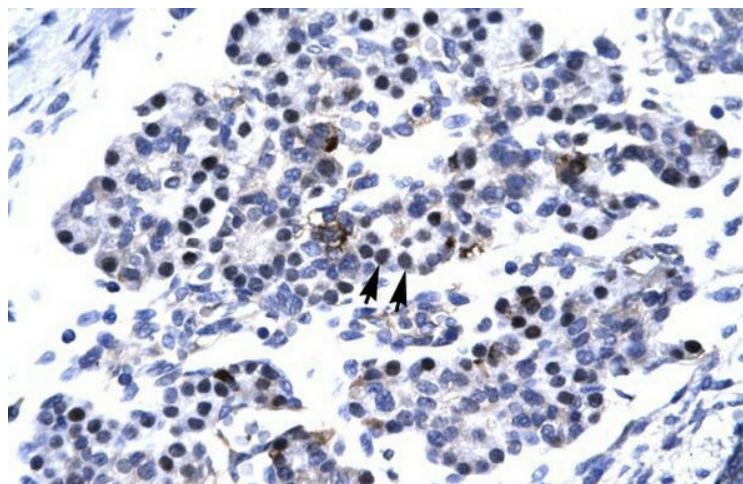
**Note:** Dog: 100%; Pig: 100%; Horse: 100%; Human: 100%; Rabbit: 100%; Rat: 92%; Mouse: 92%; Bovine: 92%

**Protein Families:** Druggable Genome, ES Cell Differentiation/IPS, Transcription Factors

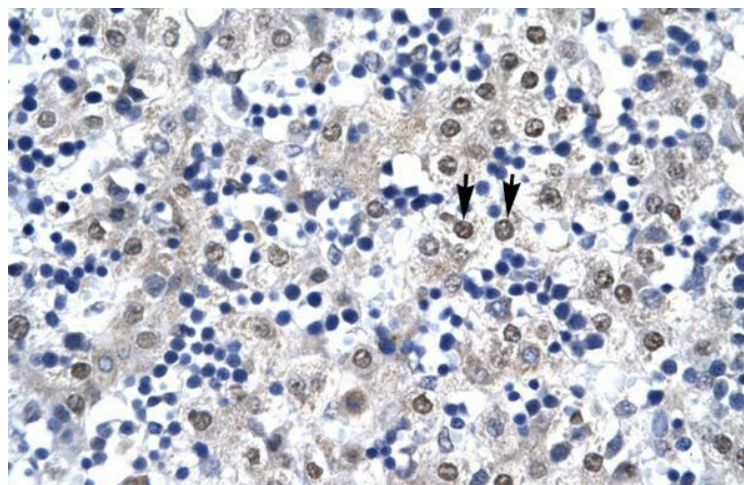
**Product images:**



WB Suggested Anti-CDX4 Antibody Titration: 0.2-1 ug/ml; Positive Control: HepG2 cell lysate



Human Pancreas



Human Liver