

Product datasheet for **TA331152**

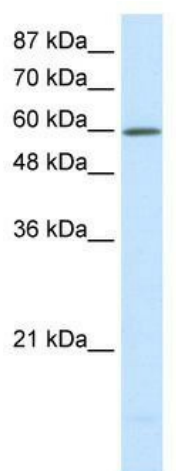
SLC30A9 Rabbit Polyclonal Antibody

Product data:

Product Type:	Primary Antibodies
Applications:	WB
Recommended Dilution:	WB
Reactivity:	Human
Host:	Rabbit
Isotype:	IgG
Clonality:	Polyclonal
Immunogen:	The immunogen for anti-SLC30A9 antibody: synthetic peptide directed towards the N terminal of human SLC30A9. Synthetic peptide located within the following region: LSQVKLYSTNVQKEGQGSQTLRVEKVPSEFETAEGIGTELKAPLKQEPLQV
Formulation:	Liquid. Purified antibody supplied in 1x PBS buffer with 0.09% (w/v) sodium azide and 2% sucrose.
Conjugation:	Unconjugated
Storage:	Store at -20°C as received.
Stability:	Stable for 12 months from date of receipt.
Predicted Protein Size:	63 kDa
Gene Name:	solute carrier family 30 member 9
Database Link:	NP_006336 Entrez Gene 10463 Human Q6PML9
Background:	HUEL includes the putative nuclear receptor interaction motif, nuclear localization and export signals, zinc finger, leucine zipper and acidic domains. HUEL is likely to be an evolutionarily conserved, housekeeping gene that plays a role intimately linked with cellular replication, DNA synthesis and/or transcriptional regulation.
Synonyms:	C4orf1; GAC63; HUEL; ZNT9
Note:	Dog: 100%; Rat: 100%; Human: 100%; Pig: 93%; Horse: 93%; Guinea pig: 93%; Rabbit: 79%
Protein Families:	Transcription Factors, Transmembrane



[View online »](#)

Product images:

WB Suggested Anti-SLC30A9 Antibody Titration:
0.2-1 ug/ml; Positive Control: HepG2 cell lysate