

## Product datasheet for **TA331149**

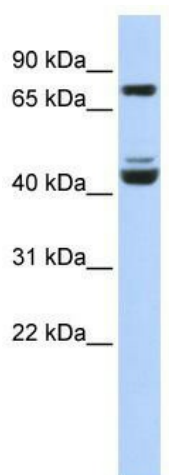
### **KLF2 Rabbit Polyclonal Antibody**

#### **Product data:**

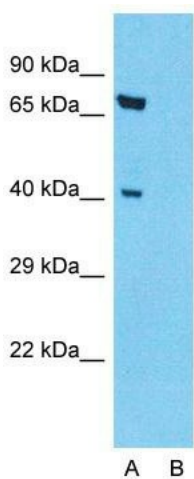
<b>Product Type:</b>	Primary Antibodies
<b>Applications:</b>	IHC, WB
<b>Recommended Dilution:</b>	WB, IHC, assay
<b>Reactivity:</b>	Human
<b>Host:</b>	Rabbit
<b>Isotype:</b>	IgG
<b>Clonality:</b>	Polyclonal
<b>Immunogen:</b>	The immunogen for anti-KLF2 antibody: synthetic peptide directed towards the middle region of human KLF2. Synthetic peptide located within the following region: PPAFGLFDDAAAAAALGLAPPAARGLLTPPASPLELLEAKPKRGRRSWP
<b>Formulation:</b>	Liquid. Purified antibody supplied in 1x PBS buffer with 0.09% (w/v) sodium azide and 2% sucrose. <i>Note that this product is shipped as lyophilized powder to China customers.</i>
<b>Conjugation:</b>	Unconjugated
<b>Storage:</b>	Store at -20°C as received.
<b>Stability:</b>	Stable for 12 months from date of receipt.
<b>Predicted Protein Size:</b>	37 kDa
<b>Gene Name:</b>	Kruppel-like factor 2
<b>Database Link:</b>	<a href="#">NP_057354</a> <a href="#">Entrez Gene 10365 Human</a> <a href="#">Q9Y5W3</a>
<b>Background:</b>	KLF2 belongs to the krueppel C2H2-type zinc-finger protein family. It contains 3 C2H2-type zinc fingers. KLF2 binds to the CACCC box in the beta-globin gene promoter and activates transcription.
<b>Synonyms:</b>	LKLF
<b>Note:</b>	Pig: 100%; Human: 100%; Rat: 93%; Mouse: 93%; Guinea pig: 93%; Zebrafish: 79%
<b>Protein Families:</b>	Transcription Factors



[View online »](#)

**Product images:**


WB Suggested Anti-KLF2 Antibody Titration: 0.2-1 ug/ml; ELISA Titer: 1:312500; Positive Control: 721\_B cell lysate


**Anti-KLF2 Western Blot & Peptide Block Validation**

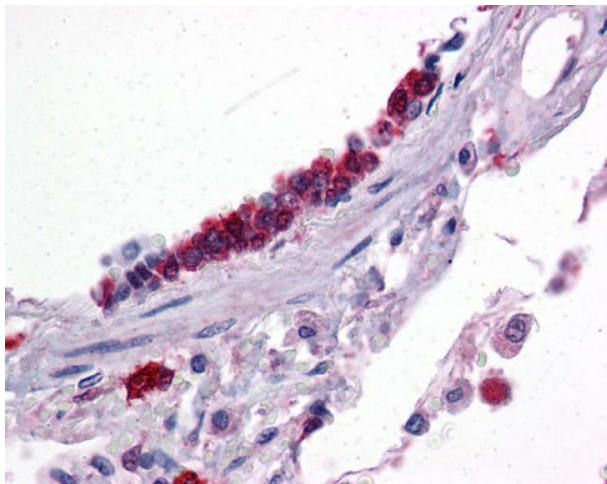
Lot Number: QC2194

Lysate: Hela cell

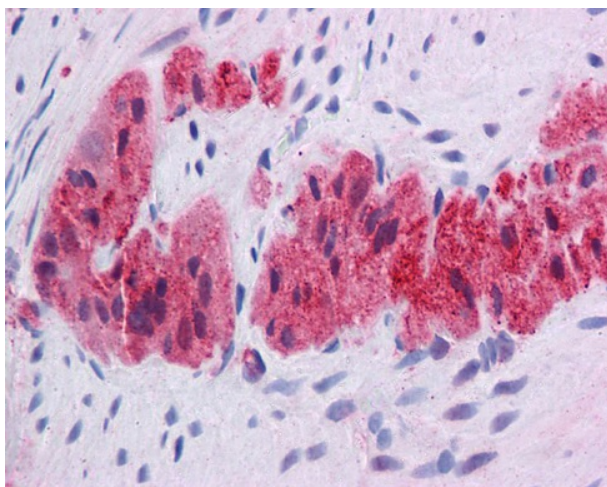
Lane A: Primary Antibody  
Lane B: Primary Antibody + Blocking Peptide

Primary Antibody Concentration: 1.0µg/ml  
Peptide Concentration: 5.0µg/ml  
Lysate Quantity: 25µg/lane  
Gel Concentration: 12%

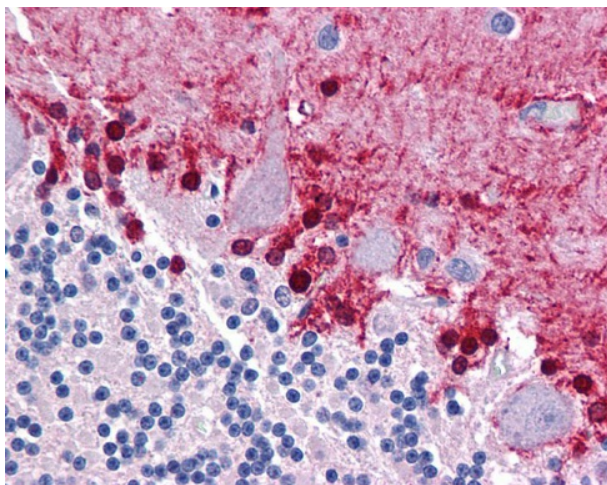
Host: Rabbit; Target Name: KLF2; Sample Tissue: Hela Whole cell; Lane A: Primary Antibody; Lane B: Primary Antibody + Blocking Peptide ; Primary Antibody Concentration:1ug/ml; Peptide Concentration: 5ug/ml; Lysate Quantity: 25ug/lane; Gel Concentration: 0.1



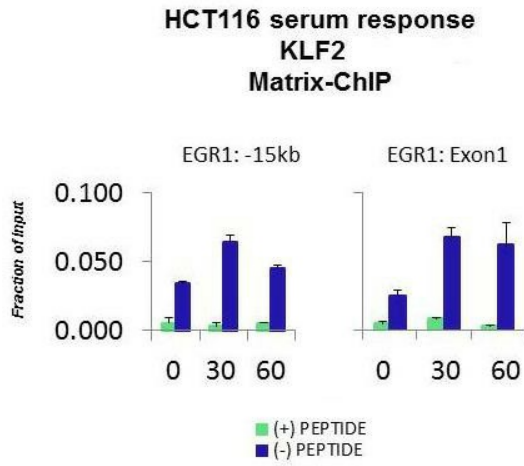
Immunohistochemistry with Human lung



Immunohistochemistry with Human Colon,  
myenteric plexus



Immunohistochemistry with Human brain,  
cerebellum



Quiescent human colon carcinoma HCT116 cultures were treated with 10% FBS for three time points (0, 15, 30min) or (0, 30, 60min) were used in Matrix-ChIP and real-time PCR assays at EGR1 gene (Exon1) and 15kb upstream site.