

Product datasheet for **TA331147**

HMG20A Rabbit Polyclonal Antibody

Product data:

Product Type:	Primary Antibodies
Applications:	WB
Recommended Dilution:	WB
Reactivity:	Human
Host:	Rabbit
Isotype:	IgG
Clonality:	Polyclonal
Immunogen:	The immunogen for anti-HMG20A antibody: synthetic peptide directed towards the middle region of human HMG20A. Synthetic peptide located within the following region: RKTQDRQKGKSHRQDAARQATHDHEKETEVKERSVFDIPIFTEEFLNHSK
Formulation:	Liquid. Purified antibody supplied in 1x PBS buffer with 0.09% (w/v) sodium azide and 2% sucrose. <i>Note that this product is shipped as lyophilized powder to China customers.</i>
Conjugation:	Unconjugated
Storage:	Store at -20°C as received.
Stability:	Stable for 12 months from date of receipt.
Predicted Protein Size:	40 kDa
Gene Name:	high mobility group 20A
Database Link:	NP_060670 Entrez Gene 10363 Human Q9NP66
Background:	HMG20A plays a role in neuronal differentiation as chromatin-associated protein. HMG20A acts as inhibitor of HMG20B. HMG20A overcomes the repressive effects of the neuronal silencer REST and induces the activation of neuronal-specific genes. HMG20A involved in the recruitment of the histone methyltransferase MLL and consequent increased methylation of histone H3 lysine 4
Synonyms:	HMGX1; HMGXB1

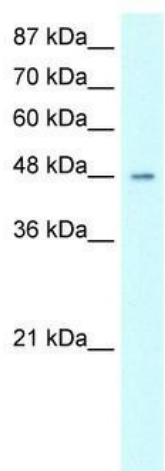


[View online »](#)

Note: Dog: 100%; Pig: 100%; Rat: 100%; Horse: 100%; Human: 100%; Mouse: 100%; Guinea pig: 100%; Bovine: 92%; Rabbit: 85%

Protein Families: Transcription Factors

Product images:



WB Suggested Anti-HMG20A Antibody Titration:
0.2-1 ug/ml; ELISA Titer: 1:312500; Positive
Control: 293T cell lysate HMG20A is supported by
BioGPS gene expression data to be expressed in
HEK293T