

Product datasheet for **TA331142**

OLIG2 Rabbit Polyclonal Antibody

Product data:

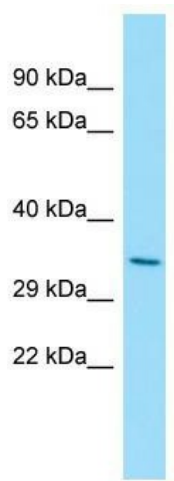
Product Type:	Primary Antibodies
Applications:	IHC, WB
Recommended Dilution:	WB, IHC
Reactivity:	Human
Host:	Rabbit
Isotype:	IgG
Clonality:	Polyclonal
Immunogen:	The immunogen for Anti-OLIG2 antibody is: synthetic peptide directed towards the C-terminal region of Human OLIG2. Synthetic peptide located within the following region: AAVSSASLPGSGLPSVGSIRPPHGLLKSPSAAAAAPLGGGGGGSGASGGF
Formulation:	Liquid. Purified antibody supplied in 1x PBS buffer with 0.09% (w/v) sodium azide and 2% sucrose. <i>Note that this product is shipped as lyophilized powder to China customers.</i>
Conjugation:	Unconjugated
Storage:	Store at -20°C as received.
Stability:	Stable for 12 months from date of receipt.
Predicted Protein Size:	32 kDa
Gene Name:	oligodendrocyte lineage transcription factor 2
Database Link:	NP_005797 Entrez Gene 10215 Human Q13516
Background:	OLIG2 is a basic helix-loop-helix transcription factor which is expressed in oligodendroglial tumors of the brain. OLIG2 is an essential regulator of ventral neuroectodermal progenitor cell fate. It is associated with T-cell acute lymphoblastic leukemia due to a chromosomal translocation t(14;21)(q11.2;q22). OLIG2 might play a role in learning deficits associated with Down syndrome.
Synonyms:	BHLHB1; bHLHe19; OLIGO2; PRKCBP2; RACK17
Note:	Human: 100%; Dog: 93%; Pig: 93%; Rat: 93%; Horse: 93%; Mouse: 93%; Guinea pig: 93%



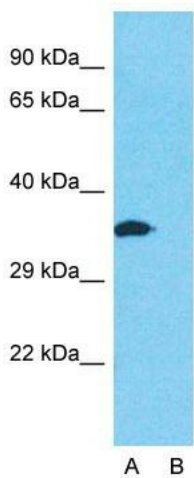
[View online »](#)

Protein Families: Druggable Genome, Transcription Factors

Product images:



OLIG2 Antibody - C-terminal region validated by WB using Fetal Lung cell lysate at 1.0ug/ml.



Anti-OLIG2 Western Blot & Peptide Block Validation

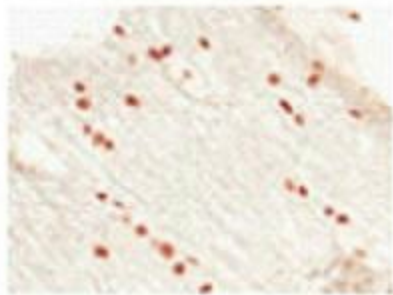
Lot Number: QC36633

Lysate: Fetal Lung

Lane A: Primary Antibody
Lane B: Primary Antibody + Blocking Peptide

Primary Antibody Concentration: 1.0µg/ml
Peptide Concentration: 5.0µg/ml
Lysate Quantity: 25µg/lane
Gel Concentration: 12%

Host: Rabbit; Target Name: OLIG2; Sample Tissue: Fetal Lung; Lane A: Primary Antibody; Lane B: Primary Antibody + Blocking Peptide ; Primary Antibody Concentration:1ug/ml; Peptide Concentration: 5ug/ml; Lysate Quantity: 25ug/lane; Gel Concentration: 0.12%



Sample Type: Human Optic Nerve and Spinal Cord
Cellular Target: Oligodendrocyte Lineage Cells; Dilution: 1:500