

Product datasheet for **TA331140**

CGI 62 (ZC2HC1A) Rabbit Polyclonal Antibody

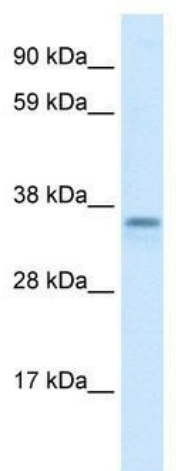
Product data:

Product Type:	Primary Antibodies
Applications:	IHC, WB
Recommended Dilution:	WB, IHC
Reactivity:	Human
Host:	Rabbit
Isotype:	IgG
Clonality:	Polyclonal
Immunogen:	The immunogen for anti-CGI-62 antibody: synthetic peptide directed towards the C terminal of human CGI-62. Synthetic peptide located within the following region: AAPHAGANVKPRNSTPPSLARNPAPGVLTNKRKTYTESYIARPDGCASS
Formulation:	Liquid. Purified antibody supplied in 1x PBS buffer with 0.09% (w/v) sodium azide and 2% sucrose. <i>Note that this product is shipped as lyophilized powder to China customers.</i>
Conjugation:	Unconjugated
Storage:	Store at -20°C as received.
Stability:	Stable for 12 months from date of receipt.
Predicted Protein Size:	35 kDa
Gene Name:	zinc finger C2HC-type containing 1A
Database Link:	NP_057094 Entrez Gene 51101 Human Q96GY0
Background:	The CGI-62 gene encodes a hypothetical protein located on chromosome 8.
Synonyms:	C8orf70; CGI-62; FAM164A
Note:	Human: 100%; Rat: 91%; Bovine: 83%; Rabbit: 83%; Horse: 77%

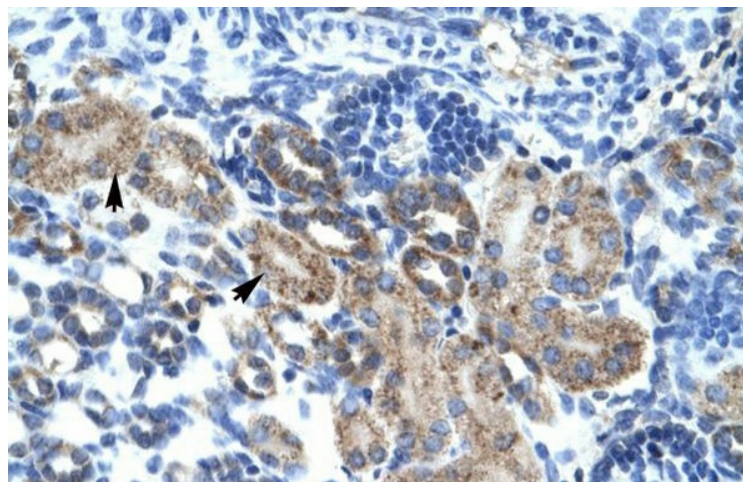


[View online »](#)

Product images:



WB Suggested Anti-CGI-62 Antibody Titration:
1.25ug/ml; Positive Control: Human brain



Human kidney