

Product datasheet for **TA331138**

TBX22 Rabbit Polyclonal Antibody

Product data:

Product Type:	Primary Antibodies
Applications:	WB
Recommended Dilution:	WB
Reactivity:	Human
Host:	Rabbit
Isotype:	IgG
Clonality:	Polyclonal
Immunogen:	The immunogen for anti-TBX22 antibody: synthetic peptide directed towards the middle region of human TBX22. Synthetic peptide located within the following region: QSMHKYKPRVHVIEQGSSVDLSQIQSLPTEGVKTFSEKETEFTTVTAYQN
Formulation:	Liquid. Purified antibody supplied in 1x PBS buffer with 0.09% (w/v) sodium azide and 2% sucrose. <i>Note that this product is shipped as lyophilized powder to China customers.</i>
Conjugation:	Unconjugated
Storage:	Store at -20°C as received.
Stability:	Stable for 12 months from date of receipt.
Predicted Protein Size:	58 kDa
Gene Name:	T-box 22
Database Link:	NP_058650 Entrez Gene 50945 Human Q9Y458



[View online »](#)

Background:

This gene is a member of a phylogenetically conserved family of genes that share a common DNA-binding domain, the T-box. T-box genes encode transcription factors involved in the regulation of developmental processes. Mutations in this gene have been associated with the inherited X-linked disorder, Cleft palate with ankyloglossia, and it is believed to play a major role in human palatogenesis. This gene is a member of a phylogenetically conserved family of genes that share a common DNA-binding domain, the T-box. T-box genes encode transcription factors involved in the regulation of developmental processes. Mutations in this gene have been associated with the inherited X-linked disorder, Cleft palate with ankyloglossia, and it is believed to play a major role in human palatogenesis. Alternatively spliced transcript variants encoding different isoforms have been found for this gene.

Synonyms:

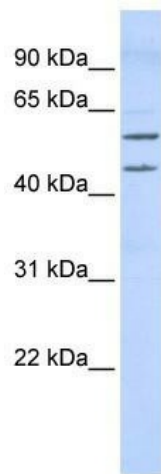
ABERS; CLPA; CPX; dJ795G23.1; TBXX

Note:

Human: 100%; Pig: 86%; Rat: 86%; Horse: 86%; Bovine: 86%; Mouse: 79%; Rabbit: 79%

Protein Families:

Transcription Factors

Product images:


WB Suggested Anti-TBX22 Antibody Titration: 0.2-1 ug/ml; ELISA Titer: 1:312500; Positive Control: 293T cell lysate