

Product datasheet for **TA331136**

PAX7 Rabbit Polyclonal Antibody

Product data:

Product Type:	Primary Antibodies
Applications:	WB
Recommended Dilution:	IHC, WB
Reactivity:	Human
Host:	Rabbit
Isotype:	IgG
Clonality:	Polyclonal
Immunogen:	The immunogen for Anti-PAX7 antibody is: synthetic peptide directed towards the C-terminal region of PAX7. Synthetic peptide located within the following region: QADFSISPLHGGLDSATSISASCSQRADSIKPGDSLPTSQAYCPPTYSTT
Formulation:	Liquid. Purified antibody supplied in 1x PBS buffer with 0.09% (w/v) sodium azide and 2% sucrose. <i>Note that this product is shipped as lyophilized powder to China customers.</i>
Conjugation:	Unconjugated
Storage:	Store at -20°C as received.
Stability:	Stable for 12 months from date of receipt.
Predicted Protein Size:	57 kDa
Gene Name:	paired box 7
Database Link:	NP_002575 Entrez Gene 5081 Human P23759
Background:	PAX7 is a member of the paired box (PAX) family of transcription factors. Members of this gene family typically contain a paired box domain, an octapeptide, and a paired-type homeodomain. These genes play critical roles during fetal development and cancer growth. The specific function of the paired box gene 7 is unknown but speculated to involve tumor suppression since fusion of this gene with a forkhead domain family member has been associated with alveolar rhabdomyosarcoma. Alternative splicing in this gene has produced two known products but the biological significance of the variants is unknown.



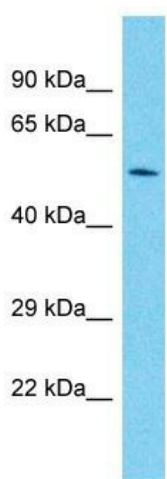
[View online »](#)

Synonyms: HUP1; PAX7B; RMS2

Note: Dog: 100%; Horse: 100%; Human: 100%; Bovine: 100%; Pig: 93%; Rat: 93%; Mouse: 93%; Rabbit: 93%; Guinea pig: 93%

Protein Families: Adult stem cells, Druggable Genome, Embryonic stem cells, ES Cell Differentiation/IPS, Transcription Factors

Product images:



Host: Rabbit

Target Name: PAX7

Sample Tissue: Fetal Heart Lysate

Antibody Dilution: 1.0µg/ml

Host: Rabbit; Target Name: PAX7; Sample Tissue: Fetal heart lysates; Antibody Dilution: 1.0ug/ml