

Product datasheet for **TA331135**

PAX6 Rabbit Polyclonal Antibody

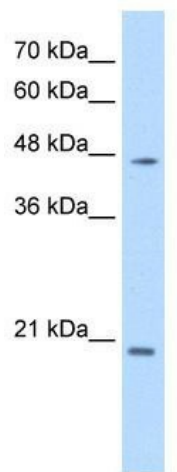
Product data:

Product Type:	Primary Antibodies
Applications:	WB
Recommended Dilution:	WB
Reactivity:	Mouse, Human
Host:	Rabbit
Isotype:	IgG
Clonality:	Polyclonal
Immunogen:	The immunogen for anti-PAX6 antibody: synthetic peptide directed towards the N terminal of human PAX6. Synthetic peptide located within the following region: GRPLPDSTRQKIVELAHSGARPCDISRILQTHADAKVQVLDNQNVSNQCV
Formulation:	Liquid. Purified antibody supplied in 1x PBS buffer with 0.09% (w/v) sodium azide and 2% sucrose. <i>Note that this product is shipped as lyophilized powder to China customers.</i>
Conjugation:	Unconjugated
Storage:	Store at -20°C as received.
Stability:	Stable for 12 months from date of receipt.
Predicted Protein Size:	48 kDa
Gene Name:	paired box 6
Database Link:	NP_001595 Entrez Gene 18508 Mouse Entrez Gene 5080 Human P26367



[View online »](#)

- Background:** PAX6 is one of many human homologues of the *Drosophila melanogaster* gene *prd*. In addition to the hallmark feature of this gene family, a conserved paired box domain, the encoded protein also contains a homeo box domain. Both domains are known to bind DNA. This gene encodes paired box gene 6, one of many human homologues of the *Drosophila melanogaster* gene *prd*. In addition to the hallmark feature of this gene family, a conserved paired box domain, the encoded protein also contains a homeo box domain. Both domains are known to bind DNA, and function as regulators of gene transcription. This gene is expressed in the developing nervous system, and in developing eyes. Mutations in this gene are known to cause aniridia as well as Peter's anomaly, both ocular diseases.
- Synonyms:** AN; AN2; D11S812E; FVH1; MGDA; WAGR
- Note:** Dog: 100%; Pig: 100%; Rat: 100%; Horse: 100%; Human: 100%; Mouse: 100%; Bovine: 100%; Rabbit: 100%; Zebrafish: 100%; Guinea pig: 100%
- Protein Families:** Adult stem cells, Druggable Genome, Embryonic stem cells, Transcription Factors
- Protein Pathways:** Maturity onset diabetes of the young
- Product images:**



WB Suggested Anti-PAX6 Antibody Titration: 0.2-1 ug/ml; Positive Control: Jurkat cell lysate