

Product datasheet for **TA331134**

Myelin expression factor 2 (MYEF2) Rabbit Polyclonal Antibody

Product data:

| | |
|-------------------------|--|
| Product Type: | Primary Antibodies |
| Applications: | IHC, WB |
| Recommended Dilution: | WB, IHC |
| Reactivity: | Mouse, Human |
| Host: | Rabbit |
| Isotype: | IgG |
| Clonality: | Polyclonal |
| Immunogen: | The immunogen for anti-MYEF2 antibody: synthetic peptide directed towards the middle region of human MYEF2. Synthetic peptide located within the following region: QAGRLGSTIFVANLDFKVGWKKLKEVFSIAGTVKRADIKEDKDGKSRGMG |
| Formulation: | Liquid. Purified antibody supplied in 1x PBS buffer with 0.09% (w/v) sodium azide and 2% sucrose. <i>Note that this product is shipped as lyophilized powder to China customers.</i> |
| Conjugation: | Unconjugated |
| Storage: | Store at -20°C as received. |
| Stability: | Stable for 12 months from date of receipt. |
| Predicted Protein Size: | 64 kDa |
| Gene Name: | myelin expression factor 2 |
| Database Link: | NP_057216 Entrez Gene 17876 Mouse Entrez Gene 50804 Human Q9P2K5 |
| Background: | MEF-2 is expressed early in the differentiation program and is suppressed by specific polypeptide growth factors. The ability of MEF-2 to recognize conserved activating elements associated with multiple-specific genes suggests that this factor may participate in the coordinate regulation of genes during myogenesis. |
| Synonyms: | HsT18564; MEF-2; MST156; MSTP156; myEF-2 |
| Note: | Dog: 100%; Pig: 100%; Rat: 100%; Horse: 100%; Human: 100%; Mouse: 100%; Bovine: 100%; Rabbit: 100%; Guinea pig: 100%; Zebrafish: 85% |



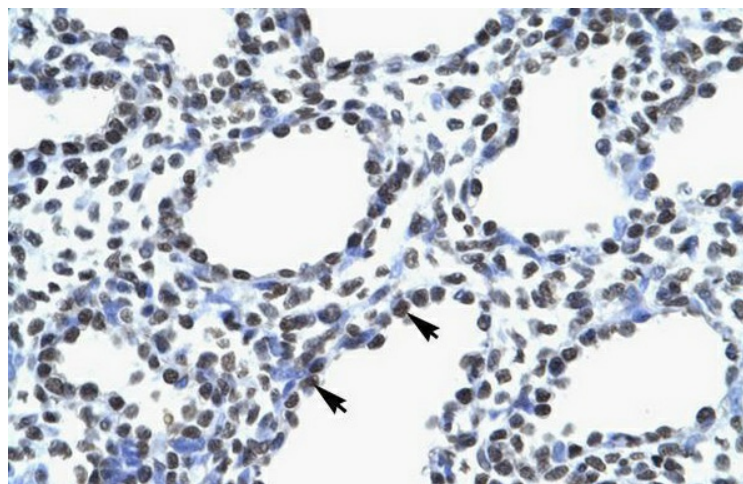
[View online »](#)

Protein Families: Transcription Factors

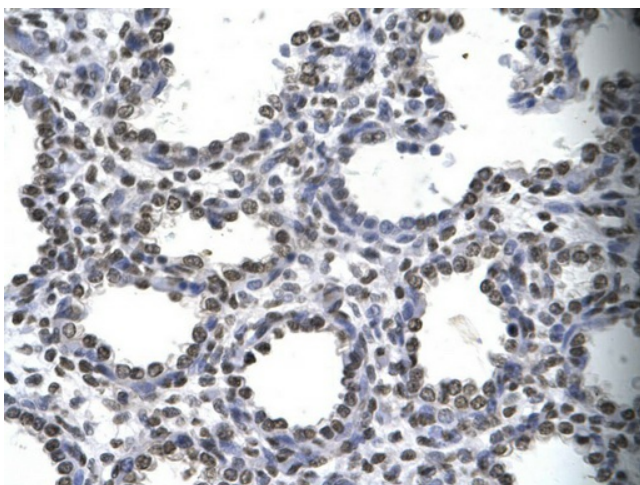
Product images:



WB Suggested Anti-MYEF2 Antibody Titration: 0.2-1 ug/ml; Positive Control: Jurkat cell lysate



Human Lung



Rabbit Anti-MYEF2 Antibody; Paraffin Embedded
Tissue: Human alveolar cell; Cellular Data:
Epithelial cells of renal tubule; Antibody
Concentration: 4.0-8.0 ug/ml; Magnification: 400X