

Product datasheet for **TA331133**

PAX4 Rabbit Polyclonal Antibody

Product data:

Product Type:	Primary Antibodies
Applications:	WB
Recommended Dilution:	WB
Reactivity:	Human
Host:	Rabbit
Isotype:	IgG
Clonality:	Polyclonal
Immunogen:	The immunogen for anti-PAX4 antibody: synthetic peptide directed towards the N terminal of human PAX4. Synthetic peptide located within the following region: ISRILKVSNGCVSKILGRYYRTGVLEPKGIGGSKPRLATPPVVARIAQLK
Formulation:	Liquid. Purified antibody supplied in 1x PBS buffer with 0.09% (w/v) sodium azide and 2% sucrose. <i>Note that this product is shipped as lyophilized powder to China customers.</i>
Conjugation:	Unconjugated
Storage:	Store at -20°C as received.
Stability:	Stable for 12 months from date of receipt.
Predicted Protein Size:	37 kDa
Gene Name:	paired box 4
Database Link:	NP_006184 Entrez Gene 5078 Human O43316



[View online »](#)

Background:

PAX4 is a member of the paired box (PAX) family of transcription factors. Members of this gene family typically contain a paired box domain, an octapeptide, and a paired-type homeodomain. These genes play critical roles during fetal development and cancer growth. The paired box gene 4 is involved in pancreatic islet development and mouse studies have demonstrated a role for this gene in differentiation of insulin-producing β -cells. This gene is a member of the paired box (PAX) family of transcription factors. Members of this gene family typically contain a paired box domain, an octapeptide, and a paired-type homeodomain. These genes play critical roles during fetal development and cancer growth. The paired box 4 gene is involved in pancreatic islet development and mouse studies have demonstrated a role for this gene in differentiation of insulin-producing beta cells. Sequence Note: This RefSeq record was created from transcript and genomic sequence data because transcript sequence consistent with the reference genome assembly was not available for all regions of the RefSeq transcript. The extent of this transcript is supported by transcript alignments. Publication Note: This RefSeq record includes a subset of the publications that are available for this gene. Please see the Entrez Gene record to access additional publications.

Synonyms:

KPD; MODY9

Note:

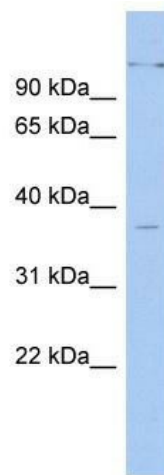
Dog: 100%; Pig: 100%; Human: 100%; Bovine: 100%; Rabbit: 100%; Rat: 93%; Horse: 93%; Mouse: 93%; Sheep: 93%; Guinea pig: 93%

Protein Families:

Embryonic stem cells, ES Cell Differentiation/IPS, Transcription Factors

Protein Pathways:

Maturity onset diabetes of the young

Product images:

WB Suggested Anti-PAX4 Antibody Titration: 0.2-1 ug/ml; ELISA Titer: 1:1562500; Positive Control: Human Stomach