

Product datasheet for **TA331130**

MAP4K6 (MINK1) Rabbit Polyclonal Antibody

Product data:

Product Type:	Primary Antibodies
Applications:	WB
Recommended Dilution:	WB
Reactivity:	Human
Host:	Rabbit
Isotype:	IgG
Clonality:	Polyclonal
Immunogen:	The immunogen for anti-MINK1 antibody: synthetic peptide directed towards the middle region of human MINK1. Synthetic peptide located within the following region: PDSSPVLSPGNKAKPDDHRSRPGRPADFVLLKERTLDEAPRPPKKAMDYS
Formulation:	Liquid. Purified antibody supplied in 1x PBS buffer with 0.09% (w/v) sodium azide and 2% sucrose. <i>Note that this product is shipped as lyophilized powder to China customers.</i>
Conjugation:	Unconjugated
Storage:	Store at -20°C as received.
Stability:	Stable for 12 months from date of receipt.
Predicted Protein Size:	148 kDa
Gene Name:	misshapen like kinase 1
Database Link:	NP_722549 Entrez Gene 50488 Human Q8N4C8



[View online »](#)

Background:

MINK1 is a serine/threonine kinase belonging to the germinal center kinase (GCK) family. The protein is structurally similar to the kinases that are related to NIK and may belong to a distinct subfamily of NIK-related kinases within the GCK family. Studies of the mouse homolog indicate an up-regulation of expression in the course of postnatal mouse cerebral development and activation of the cJun N-terminal kinase (JNK) and the p38 pathways. This gene encodes a serine/threonine kinase belonging to the germinal center kinase (GCK) family. The protein is structurally similar to the kinases that are related to NIK and may belong to a distinct subfamily of NIK-related kinases within the GCK family. Studies of the mouse homolog indicate an up-regulation of expression in the course of postnatal mouse cerebral development and activation of the cJun N-terminal kinase (JNK) and the p38 pathways. Alternative splicing occurs at this locus and four transcript variants encoding distinct isoforms have been identified.

Synonyms:

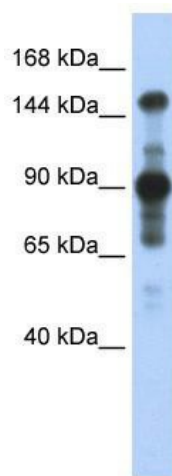
B55; MAP4K6; MINK; YSK2; ZC3

Note:

Dog: 100%; Pig: 100%; Rat: 100%; Horse: 100%; Human: 100%; Mouse: 100%; Rabbit: 100%; Guinea pig: 92%; Bovine: 85%

Protein Families:

Druggable Genome, Protein Kinase

Product images:

WB Suggested Anti-MINK1 Antibody Titration: 0.2-1 ug/ml; ELISA Titer: 1:62500; Positive Control: Transfected 293T