

Product datasheet for **TA331124**

nkx6.1 (NKX6-1) Rabbit Polyclonal Antibody

Product data:

Product Type:	Primary Antibodies
Applications:	WB
Recommended Dilution:	WB
Reactivity:	Human, Mouse
Host:	Rabbit
Isotype:	IgG
Clonality:	Polyclonal
Immunogen:	The immunogen for anti-NKX6-1 antibody: synthetic peptide directed towards the N terminal of human NKX6-1. Synthetic peptide located within the following region: MLAVGAMEGTRQSAFLLSSPPLAALHSMAEMKTPLYPAAYPPLPAGPPSS
Formulation:	Liquid. Purified antibody supplied in 1x PBS buffer with 0.09% (w/v) sodium azide and 2% sucrose. <i>Note that this product is shipped as lyophilized powder to China customers.</i>
Conjugation:	Unconjugated
Storage:	Store at -20°C as received.
Stability:	Stable for 12 months from date of receipt.
Predicted Protein Size:	38 kDa
Gene Name:	NK6 homeobox 1
Database Link:	NP_006159 Entrez Gene 18096 Mouse Entrez Gene 4825 Human P78426



[View online »](#)

Background:

NKX6-1 is the transcription factor which binds to specific A/T-rich DNA sequences in the promoter regions of a number of genes. NKX6-1 is involved in transcriptional regulation in islet beta cells. Binds to the insulin promoter and is involved in regulation of the insulin gene. Together with NKX2-2 and IRX3, NKX6-1 acts to restrict the generation of motor neurons to the appropriate region of the neural tube. NKX6-1 belongs to the class II proteins of neuronal progenitor factors, which are induced by SHH signals. In the pancreas, NKX6.1 is required for the development of beta cells and is a potent bifunctional transcription regulator that binds to AT-rich sequences within the promoter region of target genes lype et al. (2004) [PubMed 15056733]. [supplied by OMIM]. PRIMARYREFSEQ_SPAN PRIMARY_IDENTIFIER PRIMARY_SPAN COMP 1-300 U66797.1 1-300 301-307 AC096766.3 119394-119400 c 308-676 U66797.1 308-676 677-849 U66798.1 7-179 850-1116 U66799.1 7-273

Synonyms:

NKX6.1; NKX6A

Note:

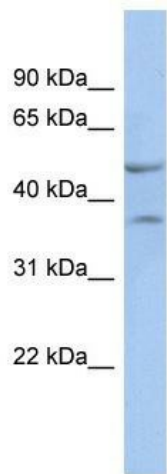
Dog: 100%; Pig: 100%; Rat: 100%; Horse: 100%; Human: 100%; Mouse: 100%; Bovine: 100%; Rabbit: 100%; Zebrafish: 86%

Protein Families:

Transcription Factors

Protein Pathways:

Maturity onset diabetes of the young

Product images:

WB Suggested Anti-NKX6-1 Antibody Titration:
0.2-1 ug/ml; ELISA Titer: 1:62500; Positive Control:
Human Small Intestine