

Product datasheet for **TA331123**

NFIX Rabbit Polyclonal Antibody

Product data:

Product Type:	Primary Antibodies
Applications:	IHC, WB
Recommended Dilution:	WB, IHC
Reactivity:	Human, Mouse
Host:	Rabbit
Isotype:	IgG
Clonality:	Polyclonal
Immunogen:	The immunogen for anti-NFIX antibody: synthetic peptide directed towards the middle region of human NFIX. Synthetic peptide located within the following region: YFVHTPESGQSDSSNQGDADIKPLPNGHLSFQDCFVTSGVWNVTELVRV
Formulation:	Liquid. Purified antibody supplied in 1x PBS buffer with 0.09% (w/v) sodium azide and 2% sucrose. <i>Note that this product is shipped as lyophilized powder to China customers.</i>
Conjugation:	Unconjugated
Storage:	Store at -20°C as received.
Stability:	Stable for 12 months from date of receipt.
Predicted Protein Size:	49 kDa
Gene Name:	nuclear factor I X
Database Link:	NP_002492 Entrez Gene 18032 Mouse Entrez Gene 4784 Human Q14938
Background:	Nuclear factor I (NFI) proteins constitute a family of sequence-specific transcription factors whose functional diversity is generated through transcription from four different genes (NFI-A, NFI-B, NFI-C, and NFI-X), alternative RNA splicing, and protein heterodimerization. NFI-X has divergent functions after binding in promoter or enhancer position. This property, combined with the differential expression of NFI-X, can achieve cell-type specificity of NFI dependent promoters and enhancers.
Synonyms:	MRSHSS; NF1A; SOTOS2

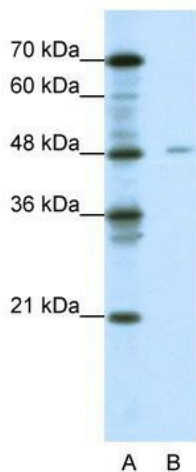


[View online »](#)

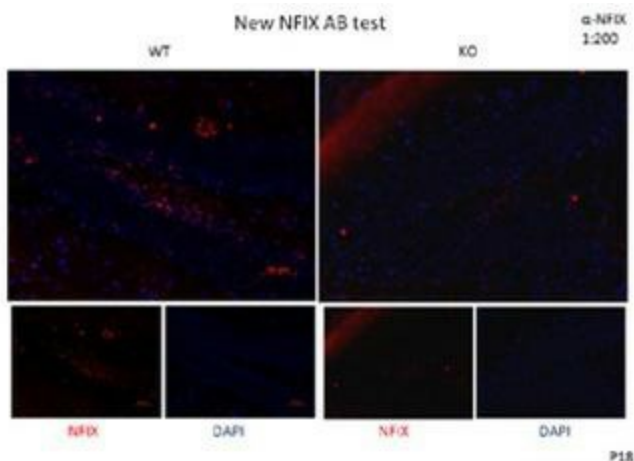
Note: Dog: 100%; Pig: 100%; Rat: 100%; Horse: 100%; Human: 100%; Mouse: 100%; Bovine: 100%; Rabbit: 100%; Guinea pig: 100%; Zebrafish: 93%

Protein Families: Transcription Factors

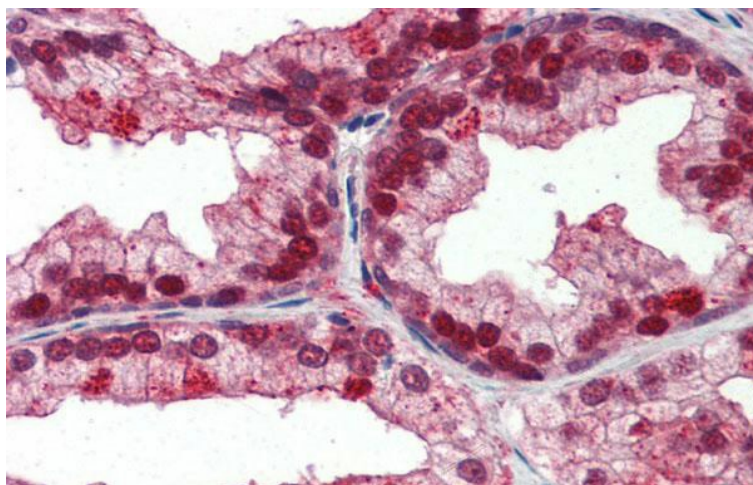
Product images:



WB Suggested Anti-NFIX Antibody Titration: 0.2-1 ug/ml; ELISA Titer: 1:312500; Positive Control: Jurkat cell lysate



DG of Hippocampus; Dilution: 1:200



Immunohistochemistry with Human Prostate lysate tissue at an antibody concentration of 5.0ug/ml using anti-NFIX antibody