

## Product datasheet for **TA331121**

### NFATC4 Rabbit Polyclonal Antibody

#### Product data:

|                         |  |
|-------------------------|--|
| Product Type:           | Primary Antibodies   |
| Applications:           | IHC, WB  |
| Recommended Dilution:   | WB, IHC  |
| Reactivity:             | Human  |
| Host:                   | Rabbit   |
| Isotype:                | IgG  |
| Clonality:              | Polyclonal   |
| Immunogen:              | The immunogen for anti-NFATC4 antibody: synthetic peptide directed towards the middle region of human NFATC4. Synthetic peptide located within the following region: GEELVLTGSNFLPDSKVVFIERGPDGKLQWEEETVNRLQSNEVTLTLTV |
| Formulation:            | Liquid. Purified antibody supplied in 1x PBS buffer with 0.09% (w/v) sodium azide and 2% sucrose.<br><i>Note that this product is shipped as lyophilized powder to China customers.</i>                                |
| Conjugation:            | Unconjugated   |
| Storage:                | Store at -20°C as received.  |
| Stability:              | Stable for 12 months from date of receipt.   |
| Predicted Protein Size: | 95 kDa   |
| Gene Name:              | nuclear factor of activated T-cells 4  |
| Database Link:          | <a href="#">NP_001129494</a><br><a href="#">Entrez Gene 4776 Human</a><br><a href="#">Q14934</a>   |



[View online »](#)

**Background:**

NFATC4 is a member of the nuclear factors of activated T cells DNA-binding transcription complex. This complex consists of at least two components: a preexisting cytosolic component that translocates to the nucleus upon T cell receptor (TCR) stimulation and an inducible nuclear component. Other members of this family of nuclear factors of activated T cells also participate in the formation of this complex. NFATC4 plays a role in the inducible expression of cytokine genes in T cells, especially in the induction of the IL-2 and IL-4. The product of this gene is a member of the nuclear factors of activated T cells DNA-binding transcription complex. This complex consists of at least two components: a preexisting cytosolic component that translocates to the nucleus upon T cell receptor (TCR) stimulation and an inducible nuclear component. Other members of this family of nuclear factors of activated T cells also participate in the formation of this complex. The product of this gene plays a role in the inducible expression of cytokine genes in T cells, especially in the induction of the IL-2 and IL-4.

**Synonyms:**

NF-AT3; NF-ATC4; NFAT3

**Note:**

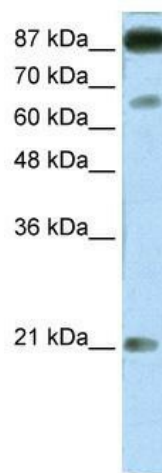
Dog: 100%; Pig: 100%; Rat: 100%; Horse: 100%; Human: 100%; Mouse: 100%; Bovine: 100%; Rabbit: 100%; Guinea pig: 100%; Yeast: 85%; Zebrafish: 82%

**Protein Families:**

Druggable Genome, Transcription Factors

**Protein Pathways:**

Axon guidance, B cell receptor signaling pathway, MAPK signaling pathway, Natural killer cell mediated cytotoxicity, T cell receptor signaling pathway, VEGF signaling pathway, Wnt signaling pathway

**Product images:**

WB Suggested Anti-NFATC4 Antibody Titration: 1.25ug/ml; Positive Control: Transfected 293T



Human Muscle