

Product datasheet for **TA331118**

MYT1 Rabbit Polyclonal Antibody

Product data:

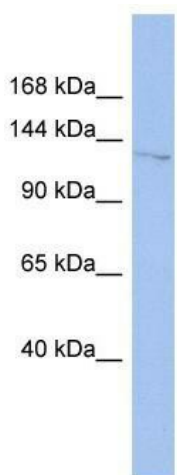
Product Type:	Primary Antibodies
Applications:	IHC, WB
Recommended Dilution:	WB, IHC
Reactivity:	Human
Host:	Rabbit
Isotype:	IgG
Clonality:	Polyclonal
Immunogen:	The immunogen for anti-MYT1 antibody: synthetic peptide directed towards the N terminal of human MYT1. Synthetic peptide located within the following region: CTGSGHVRGKYSRHRSLQSCPLAKKRKLEGAEAEHLVSKRKSHPLKLALD
Formulation:	Liquid. Purified antibody supplied in 1x PBS buffer with 0.09% (w/v) sodium azide and 2% sucrose. <i>Note that this product is shipped as lyophilized powder to China customers.</i>
Conjugation:	Unconjugated
Storage:	Store at -20°C as received.
Stability:	Stable for 12 months from date of receipt.
Predicted Protein Size:	122 kDa
Gene Name:	myelin transcription factor 1
Database Link:	NP_004526 Entrez Gene 4661 Human Q01538
Background:	The protein encoded by this gene is a member of a family of neural specific, zinc finger-containing DNA-binding proteins. The protein binds to the promoter regions of proteolipid proteins of the central nervous system and plays a role in the developing nervous system. [provided by RefSeq, Jul 2008]
Synonyms:	C20orf36; MTF1; MYT1; NZF2; PLPB1; ZC2H2C1; ZC2HC4A
Note:	Rat: 100%; Horse: 100%; Human: 100%; Dog: 92%; Rabbit: 92%; Pig: 85%; Mouse: 85%; Bovine: 85%; Guinea pig: 85%



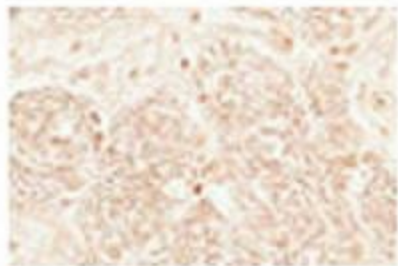
[View online »](#)

Protein Families: Transcription Factors

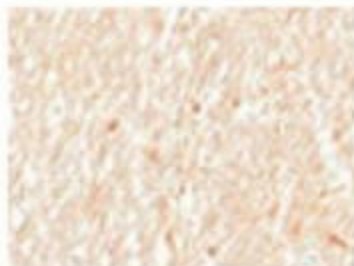
Product images:



WB Suggested Anti-MYT1 Antibody Titration: 0.2-1 ug/ml; ELISA Titer: 1:62500; Positive Control: THP-1 cell lysate



IHC- PZ



IHC- P

Sample Type: Human Optic Nerve and Spinal Cord
Cellular Target: Oligodendrocyte Lineage cells; Dilution: 1:1000