

Product datasheet for TA331117

CITED1 Rabbit Polyclonal Antibody

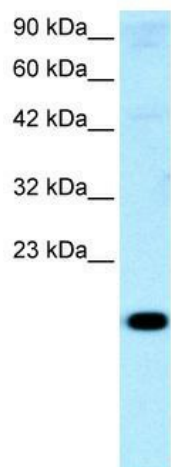
Product data:

Product Type:	Primary Antibodies
Applications:	IHC, WB
Recommended Dilution:	WB, IHC
Reactivity:	Human
Host:	Rabbit
Isotype:	IgG
Clonality:	Polyclonal
Immunogen:	The immunogen for anti-CITED1 antibody: synthetic peptide directed towards the middle region of human CITED1. Synthetic peptide located within the following region: IGSPTTTTPTKPPSFLHPAPHLASMLQLKLSQYQGMAAATPGQPGEA
Formulation:	Liquid. Purified antibody supplied in 1x PBS buffer with 0.09% (w/v) sodium azide and 2% sucrose. <i>Note that this product is shipped as lyophilized powder to China customers.</i>
Conjugation:	Unconjugated
Storage:	Store at -20°C as received.
Stability:	Stable for 12 months from date of receipt.
Predicted Protein Size:	20 kDa
Gene Name:	Cbp/p300 interacting transactivator with Glu/Asp rich carboxy-terminal domain 1
Database Link:	NP_004134 Entrez Gene 4435 Human Q99966
Background:	CBP/p300-interacting transactivator 1 (CITED1, melanocyte-specific protein 1) is a nuclear protein that shares two highly conserved domains, CR1 and CR2. The CR2 domain is significantly acidic and activates transcription in yeast cells.
Synonyms:	MSG1
Note:	Human: 100%; Dog: 85%; Pig: 85%; Rat: 85%; Bovine: 85%; Guinea pig: 85%; Rabbit: 83%; Mouse: 77%
Protein Families:	Transcription Factors

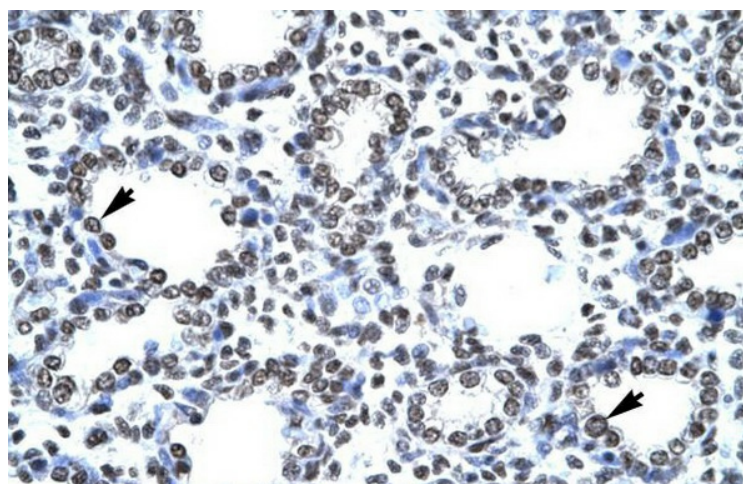


[View online »](#)

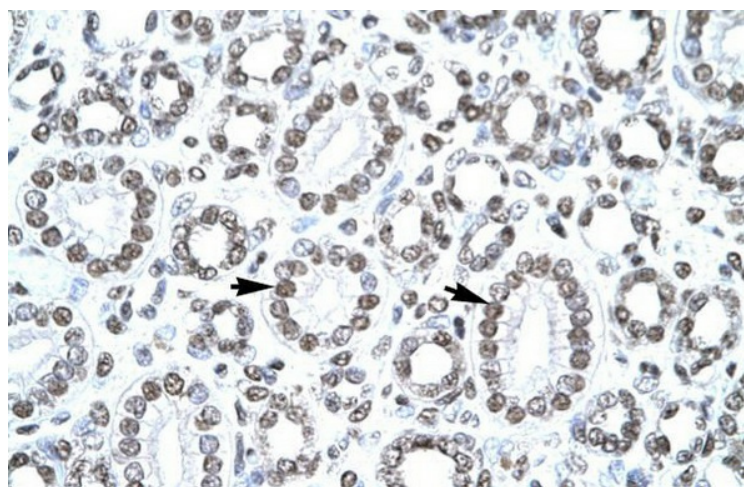
Product images:



WB Suggested Anti-CITED1 Antibody Titration:
0.2-1 ug/ml; Positive Control: HepG2 cell lysate



Human Lung



Human kidney