

Product datasheet for **TA331113**

Methionyl tRNA synthetase (MARS) Rabbit Polyclonal Antibody

Product data:

Product Type:	Primary Antibodies
Applications:	WB
Recommended Dilution:	WB
Reactivity:	Human
Host:	Rabbit
Isotype:	IgG
Clonality:	Polyclonal
Immunogen:	The immunogen for anti-MARS antibody: synthetic peptide directed towards the middle region of human MARS. Synthetic peptide located within the following region: GHQIGTVSPLFQKLENDQIESLRQRFGGGQAKTSPKPAVVETVTTAKPQQ
Formulation:	Liquid. Purified antibody supplied in 1x PBS buffer with 0.09% (w/v) sodium azide and 2% sucrose. <i>Note that this product is shipped as lyophilized powder to China customers.</i>
Purification:	Affinity Purified
Conjugation:	Unconjugated
Storage:	Store at -20°C as received.
Stability:	Stable for 12 months from date of receipt.
Predicted Protein Size:	101 kDa
Gene Name:	methionyl-tRNA synthetase
Database Link:	NP_004981 Entrez Gene 4141 Human P56192
Background:	Aminoacyl-tRNA synthetases are a class of enzymes that charge tRNAs with their cognate amino acids. MARS belongs to the class I family of tRNA synthetases. Aminoacyl-tRNA synthetases are a class of enzymes that charge tRNAs with their cognate amino acids. The protein encoded by this gene belongs to the class I family of tRNA synthetases. Publication Note: This RefSeq record includes a subset of the publications that are available for this gene. Please see the Entrez Gene record to access additional publications.



[View online »](#)

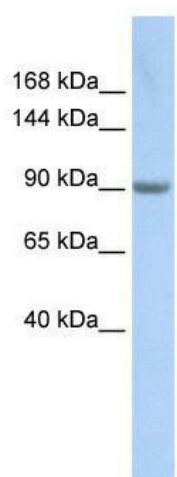
Synonyms: CMT2U; ILFS2; ILLD; METRS; MRS; MTRNS; SPG70

Note: Dog: 100%; Pig: 100%; Rat: 100%; Human: 100%; Bovine: 100%; Rabbit: 100%; Horse: 93%;
Mouse: 93%; Zebrafish: 93%; Guinea pig: 93%

Protein Families: Druggable Genome

Protein Pathways: Aminoacyl-tRNA biosynthesis, Selenoamino acid metabolism

Product images:



WB Suggested Anti-MARS Antibody Titration: 0.2-1 ug/ml; ELISA Titer: 1:12500; Positive Control: Hela cell lysate