

Product datasheet for TA331110

Smad6 Rabbit Polyclonal Antibody

Product data:

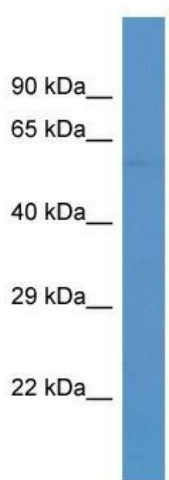
Product Type:	Primary Antibodies
Applications:	WB
Recommended Dilution:	WB
Reactivity:	Mouse
Host:	Rabbit
Isotype:	IgG
Clonality:	Polyclonal
Immunogen:	The immunogen for Anti-Smad6 antibody is: synthetic peptide directed towards the C-terminal region of MOUSE Smad6. Synthetic peptide located within the following region: PDGWAYNRGEHPHFVNSPTLDAPGGRALVVRKVPYGYSIKVDFERSGL
Formulation:	Liquid. Purified antibody supplied in 1x PBS buffer with 0.09% (w/v) sodium azide and 2% sucrose. <i>Note that this product is shipped as lyophilized powder to China customers.</i>
Conjugation:	Unconjugated
Storage:	Store at -20°C as received.
Stability:	Stable for 12 months from date of receipt.
Predicted Protein Size:	54 kDa
Gene Name:	SMAD family member 6
Database Link:	NP_032568 Entrez Gene 17130 Mouse O35182
Background:	Smad6 binds to regulatory elements in target promoter regions. It may block the BMP-SMAD1 signaling pathway by competing with SMAD4 for receptor-activated SMAD1-binding. It acts as a mediator of TGF-beta and BMP anti-inflammatory activity. It suppresses IL1R-TLR signaling through its direct interaction with PEL1, preventing NF-kappa-B activation, nuclear transport and NF-kappa-B-mediated expression of proinflammatory genes.
Synonyms:	hSMAD6; HsT17432; MADH6; MADH7



[View online »](#)

Note: Dog: 100%; Pig: 100%; Rat: 100%; Horse: 100%; Human: 100%; Mouse: 100%; Bovine: 100%; Rabbit: 100%; Guinea pig: 100%; Zebrafish: 86%

Product images:



Host: Rabbit

Target Name: Smad6

Sample Tissue: Mouse Kidney Lysate

Antibody Dilution: 1.0 μ g/ml

Host: Rabbit; Target Name: Smad6; Sample Tissue: Mouse Kidney lysates; Antibody Dilution: 1.0ug/ml