

Product datasheet for **TA331109**

Smad4 Rabbit Polyclonal Antibody

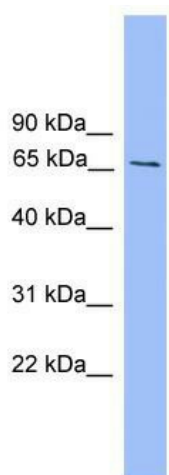
Product data:

Product Type:	Primary Antibodies
Applications:	WB
Recommended Dilution:	WB
Reactivity:	Mouse
Host:	Rabbit
Isotype:	IgG
Clonality:	Polyclonal
Immunogen:	The immunogen for anti-Smad4 antibody: synthetic peptide directed towards the middle region of human Smad4. Synthetic peptide located within the following region: YVHDFEGQPSLPTEGHSIQTIQHPPSNRASTETYSAPALLAPAESNATST
Formulation:	Liquid. Purified antibody supplied in 1x PBS buffer with 0.09% (w/v) sodium azide and 2% sucrose. <i>Note that this product is shipped as lyophilized powder to China customers.</i>
Conjugation:	Unconjugated
Storage:	Store at -20°C as received.
Stability:	Stable for 12 months from date of receipt.
Predicted Protein Size:	60 kDa
Gene Name:	SMAD family member 4
Database Link:	NP_032566 Entrez Gene 17128 Mouse P97471
Background:	The function of Smad4 remains unknown.
Synonyms:	DPC4; hSMAD4; JIP; MADH4; OTTHUMP00000163548
Note:	Dog: 100%; Pig: 100%; Rat: 100%; Goat: 100%; Horse: 100%; Human: 100%; Mouse: 100%; Sheep: 100%; Bovine: 100%; Guinea pig: 100%; Rabbit: 93%; Zebrafish: 85%



[View online »](#)

Product images:



WB Suggested Anti-Smad4 Antibody Titration:
0.2-1 ug/ml; ELISA Titer: 1:312500; Positive
Control: Mouse Brain