

## Product datasheet for **TA331107**

### TSFM Rabbit Polyclonal Antibody

#### Product data:

Product Type:	Primary Antibodies
Applications:	IHC, WB
Recommended Dilution:	WB, IHC
Reactivity:	Human
Host:	Rabbit
Isotype:	IgG
Clonality:	Polyclonal
Immunogen:	The immunogen for anti-TSFM antibody: synthetic peptide directed towards the N terminal of human TSFM. Synthetic peptide located within the following region: KQAEIWLHKEAQKEGWSKAAKLQGRKTK EGLIGLLQEGNTTVLVEVNCET
Formulation:	Liquid. Purified antibody supplied in 1x PBS buffer with 0.09% (w/v) sodium azide and 2% sucrose. <i>Note that this product is shipped as lyophilized powder to China customers.</i>
Conjugation:	Unconjugated
Storage:	Store at -20°C as received.
Stability:	Stable for 12 months from date of receipt.
Predicted Protein Size:	38 kDa
Gene Name:	Ts translation elongation factor, mitochondrial
Database Link:	<a href="#">NP_005717</a> <a href="#">Entrez Gene 10102 Human P43897</a>
Background:	The TSFM gene encodes a protein that is expressed in all tissues, with the highest levels of expression in skeletal muscle, liver, and kidney.
Synonyms:	EFTS; EFTSMT
Note:	Human: 100%; Dog: 93%; Pig: 93%; Rat: 93%; Horse: 93%; Mouse: 93%; Bovine: 93%; Guinea pig: 93%; Rabbit: 86%; Zebrafish: 77%
Protein Families:	Transcription Factors

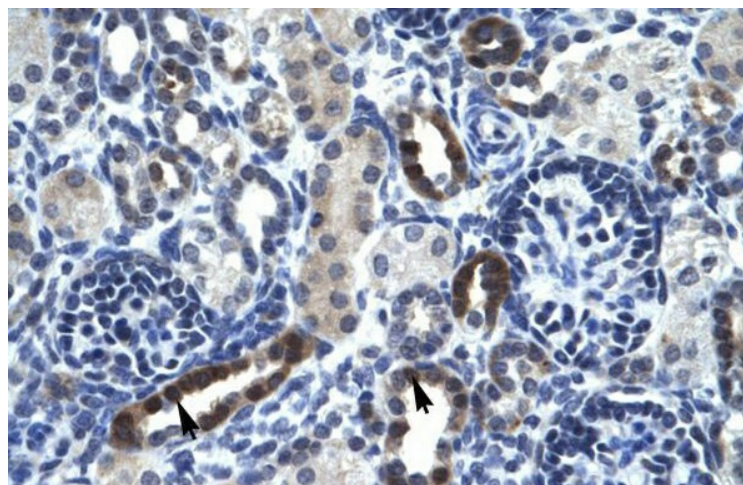


[View online »](#)

## Product images:



WB Suggested Anti-TSFM Antibody Titration: 0.2-1 ug/ml; Positive Control: Human Liver



Human kidney