

Product datasheet for **TA331100**

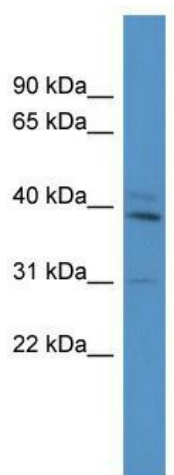
Tbx10 Rabbit Polyclonal Antibody

Product data:

Product Type:	Primary Antibodies
Applications:	WB
Recommended Dilution:	WB
Reactivity:	Mouse
Host:	Rabbit
Isotype:	IgG
Clonality:	Polyclonal
Immunogen:	The immunogen for anti-Tbx10 antibody: synthetic peptide corresponding to a region of Mouse. Synthetic peptide located within the following region: YAFHSSAWLVAGKADPATPGRVHFHPDSPAQWMRQIVSFDKLLKLTNN
Formulation:	Liquid. Purified antibody supplied in 1x PBS buffer with 0.09% (w/v) sodium azide and 2% sucrose.
Conjugation:	Unconjugated
Storage:	Store at -20°C as received.
Stability:	Stable for 12 months from date of receipt.
Predicted Protein Size:	42 kDa
Gene Name:	T-box 10
Database Link:	NP_001001320 Entrez Gene 109575 Mouse Q810F8
Background:	Tbx10 is a probable transcriptional regulator involved in developmental processes.
Synonyms:	Dc; Tbx7; Tbx13
Note:	Rat: 100%; Horse: 100%; Human: 100%; Mouse: 100%; Bovine: 100%; Dog: 92%; Pig: 92%; Rabbit: 92%; Zebrafish: 92%; Guinea pig: 92%



[View online »](#)

Product images:

WB Suggested Anti-Tbx10 Antibody Titration: 0.2-1 ug/ml; ELISA Titer: 1:1562500; Positive Control: Mouse Brain