

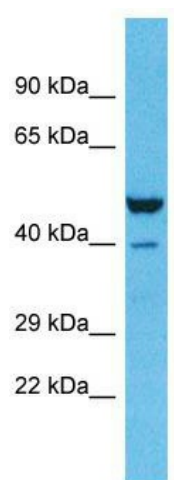
Product datasheet for **TA331099**

ZNF589 Rabbit Polyclonal Antibody

Product data:

Product Type:	Primary Antibodies
Applications:	WB
Recommended Dilution:	WB
Reactivity:	Human
Host:	Rabbit
Isotype:	IgG
Clonality:	Polyclonal
Immunogen:	The immunogen for Anti-ZNF589 antibody is: synthetic peptide directed towards the C-terminal region of Human ZNF589. Synthetic peptide located within the following region: SCKPYLIRHQRTHTREKSFMCCTVCGRGFREKSELIKHQRIHTGDKPYVCR
Formulation:	Liquid. Purified antibody supplied in 1x PBS buffer with 0.09% (w/v) sodium azide and 2% sucrose.
Conjugation:	Unconjugated
Storage:	Store at -20°C as received.
Stability:	Stable for 12 months from date of receipt.
Predicted Protein Size:	39 kDa
Gene Name:	zinc finger protein 589
Database Link:	NP_057173 Entrez Gene 51385 Human Q86UQ0
Background:	ZNF589 may play a role in hematopoietic stem/progenitor cell differentiation and may play a role as a DNA binding-dependent transcriptional repressor.
Synonyms:	SZF1
Note:	Dog: 100%; Pig: 100%; Rat: 100%; Horse: 100%; Human: 100%; Mouse: 100%; Bovine: 100%; Rabbit: 100%; Guinea pig: 100%
Protein Families:	Transcription Factors


[View online »](#)

Product images:


Host: Rabbit; Target Name: ZNF589; Sample
Tissue: Lung Tumor lysates; Antibody Dilution:
1.0ug/ml