

Product datasheet for **TA331098**

ZNF391 Rabbit Polyclonal Antibody

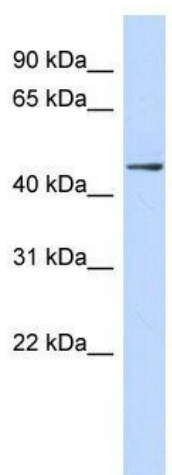
Product data:

Product Type:	Primary Antibodies
Applications:	WB
Recommended Dilution:	WB
Reactivity:	Human
Host:	Rabbit
Isotype:	IgG
Clonality:	Polyclonal
Immunogen:	The immunogen for anti-ZNF391 antibody: synthetic peptide directed towards the middle region of human ZNF391. Synthetic peptide located within the following region: HTQERPYKCNECGKAFGDRSTIIQHQRHTGENPYECSKCGKAFSWISSL
Formulation:	Liquid. Purified antibody supplied in 1x PBS buffer with 0.09% (w/v) sodium azide and 2% sucrose.
Conjugation:	Unconjugated
Storage:	Store at -20°C as received.
Stability:	Stable for 12 months from date of receipt.
Predicted Protein Size:	41 kDa
Gene Name:	zinc finger protein 391
Database Link:	NP_001070249 Entrez Gene 346157 Human Q9UJN7
Background:	ZNF391 belongs to the krueppel C2H2-type zinc-finger protein family. It contains 9 C2H2-type zinc fingers. ZNF391 may be involved in transcriptional regulation.
Synonyms:	dj153G14.3
Note:	Dog: 100%; Pig: 100%; Horse: 100%; Human: 100%; Bovine: 100%; Rat: 91%; Mouse: 91%; Rabbit: 91%; Guinea pig: 91%



[View online »](#)

Product images:



WB Suggested Anti-ZNF391 Antibody Titration:
0.2-1 ug/ml; ELISA Titer: 1:312500; Positive
Control: Human Lung