

## Product datasheet for **TA331097**

### HLA-DQA2 Rabbit Polyclonal Antibody

#### Product data:

Product Type:	Primary Antibodies
Applications:	WB
Recommended Dilution:	WB
Reactivity:	Human
Host:	Rabbit
Isotype:	IgG
Clonality:	Polyclonal
Immunogen:	The immunogen for anti-HLA-DQA2 antibody: synthetic peptide directed towards the middle region of human HLA-DQA2. Synthetic peptide located within the following region: LPMFSKFISFDPQSALRNMAVGKHTLEFMMRQSNSTAATNEVPEVTVFSK
Formulation:	Liquid. Purified antibody supplied in 1x PBS buffer with 0.09% (w/v) sodium azide and 2% sucrose. <i>Note that this product is shipped as lyophilized powder to China customers.</i>
Purification:	Affinity Purified
Conjugation:	Unconjugated
Storage:	Store at -20°C as received.
Stability:	Stable for 12 months from date of receipt.
Predicted Protein Size:	28 kDa
Gene Name:	major histocompatibility complex, class II, DQ alpha 2
Database Link:	<a href="#">NP_064440</a> <a href="#">Entrez Gene 3118 Human</a> <a href="#">P01906</a>

**Background:** This gene belongs to the HLA class II alpha chain family. The encoded protein forms a heterodimer with a class II beta chain. It is located in intracellular vesicles and plays a central role in the peptide loading of MHC class II molecules by helping to release the CLIP molecule from the peptide binding site. Class II molecules are expressed in antigen presenting cells (B lymphocytes, dendritic cells, macrophages) and are used to present antigenic peptides on the cell surface to be recognized by CD4 T-cells.



[View online »](#)

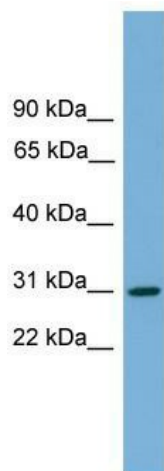
**Synonyms:** DX-ALPHA; HLA-DXA

**Note:** Human: 100%; Pig: 93%; Goat: 86%; Horse: 86%; Mouse: 86%; Sheep: 86%; Bovine: 86%; Rabbit: 86%

**Protein Families:** Transmembrane

**Protein Pathways:** Allograft rejection, Antigen processing and presentation, Asthma, Autoimmune thyroid disease, Cell adhesion molecules (CAMs), Graft-versus-host disease, Systemic lupus erythematosus, Type I diabetes mellitus, Viral myocarditis

### Product images:



WB Suggested Anti-HLA-DQA2 Antibody Titration:  
0.2-1 ug/ml; ELISA Titer: 1:312500; Positive  
Control: Human brain