

## Product datasheet for **TA331094**

### TMPRSS4 Rabbit Polyclonal Antibody

#### Product data:

Product Type:	Primary Antibodies
Applications:	WB
Recommended Dilution:	WB
Reactivity:	Human
Host:	Rabbit
Isotype:	IgG
Clonality:	Polyclonal
Immunogen:	The immunogen for anti-TMPRSS4 antibody: synthetic peptide directed towards the N terminal of human TMPRSS4. Synthetic peptide located within the following region: IPRKQLCDGELDCPLGEDEEHCVKSFPEGPAVAVRLSKDRSTLQVLDSAT
Formulation:	Liquid. Purified antibody supplied in 1x PBS buffer with 0.09% (w/v) sodium azide and 2% sucrose. <i>Note that this product is shipped as lyophilized powder to China customers.</i>
Purification:	Affinity Purified
Conjugation:	Unconjugated
Storage:	Store at -20°C as received.
Stability:	Stable for 12 months from date of receipt.
Predicted Protein Size:	48 kDa
Gene Name:	transmembrane protease, serine 4
Database Link:	<a href="#">NP_001077416</a> <a href="#">Entrez Gene 56649 Human</a> <a href="#">Q9NRS4</a>
Background:	This gene encodes a member of the serine protease family. Serine proteases are known to be involved in a variety of biological processes, whose malfunction often leads to human diseases and disorders. This gene was identified as a gene overexpressed in pancreatic carcinoma. The encoded protein is membrane bound with a N-terminal anchor sequence and a glycosylated extracellular region containing the serine protease domain. Multiple transcript variants encoding different isoforms have been found for this gene.



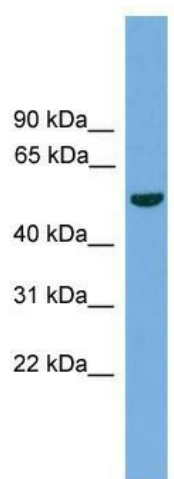
[View online »](#)

**Synonyms:** CAPH2; MT-SP2; TMPRSS3

**Note:** Rat: 100%; Horse: 100%; Human: 100%; Mouse: 100%; Dog: 92%; Pig: 92%; Guinea pig: 92%; Bovine: 85%; Rabbit: 85%

**Protein Families:** Druggable Genome, Protease, Transmembrane

**Product images:**



WB Suggested Anti-TMPRSS4 Antibody Titration:  
0.2-1 ug/ml; ELISA Titer: 1:1562500; Positive  
Control: Jurkat cell lysate