

Product datasheet for **TA331093**

SLC10A3 Rabbit Polyclonal Antibody

Product data:

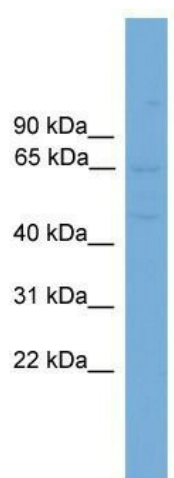
Product Type:	Primary Antibodies
Applications:	WB
Recommended Dilution:	WB
Reactivity:	Human
Host:	Rabbit
Isotype:	IgG
Clonality:	Polyclonal
Immunogen:	The immunogen for anti-SLC10A3 antibody: synthetic peptide directed towards the middle region of human SLC10A3. Synthetic peptide located within the following region: MTFLSTVAATGFLPLSSAIYSRLLSIHETLHVPISKILGTLFIAPIAV
Formulation:	Liquid. Purified antibody supplied in 1x PBS buffer with 0.09% (w/v) sodium azide and 2% sucrose. <i>Note that this product is shipped as lyophilized powder to China customers.</i>
Purification:	Affinity Purified
Conjugation:	Unconjugated
Storage:	Store at -20°C as received.
Stability:	Stable for 12 months from date of receipt.
Predicted Protein Size:	50 kDa
Gene Name:	solute carrier family 10 member 3
Database Link:	NP_062822 Entrez Gene 8273 Human P09131
Background:	This gene maps to a GC-rich region of the X chromosome and was identified by its proximity to a CpG island. It is thought to be a housekeeping gene. Alternative splicing results in multiple transcript variants encoding distinct isoforms.
Synonyms:	DXS253E; P3
Note:	Pig: 100%; Rat: 100%; Horse: 100%; Human: 100%; Mouse: 100%; Dog: 93%; Bovine: 93%; Guinea pig: 93%



[View online »](#)

Protein Families: Druggable Genome, Transmembrane

Product images:



WB Suggested Anti-SLC10A3 Antibody Titration:
0.2-1 ug/ml; Positive Control: HeLa cell lysate;
SLC10A3 is supported by BioGPS gene expression
data to be expressed in HeLa