

## Product datasheet for **TA331092**

### TRPV5 Rabbit Polyclonal Antibody

#### Product data:

Product Type:	Primary Antibodies
Applications:	IHC, WB
Recommended Dilution:	WB, IHC
Reactivity:	Human
Host:	Rabbit
Isotype:	IgG
Clonality:	Polyclonal
Immunogen:	The immunogen for anti-TRPV5 antibody: synthetic peptide directed towards the N terminal of human TRPV5. Synthetic peptide located within the following region: MLQKRILESPLLRASKENDLSVLRQLLDCTCDVRQRGALGETALHIAA
Formulation:	Liquid. Purified antibody supplied in 1x PBS buffer with 0.09% (w/v) sodium azide and 2% sucrose. <i>Note that this product is shipped as lyophilized powder to China customers.</i>
Purification:	Affinity Purified
Conjugation:	Unconjugated
Storage:	Store at -20°C as received.
Stability:	Stable for 12 months from date of receipt.
Predicted Protein Size:	82 kDa
Gene Name:	transient receptor potential cation channel subfamily V member 5
Database Link:	<a href="#">NP_062815</a> <a href="#">Entrez Gene 56302 Human</a> <a href="#">Q9NQA5</a>



[View online »](#)

**Background:**

TRPV5 is a member of the transient receptor family and the TrpV subfamily. TRPV5, a calcium-selective channel, has 6 transmembrane-spanning domains, multiple potential phosphorylation sites, an N-linked glycosylation site, and 5 ANK repeats. TRPV5 forms homotetramers or heterotetramers and is activated by a low internal calcium level. This gene is a member of the transient receptor family and the TrpV subfamily. The calcium-selective channel encoded by this gene has 6 transmembrane-spanning domains, multiple potential phosphorylation sites, an N-linked glycosylation site, and 5 ANK repeats. This protein forms homotetramers or heterotetramers and is activated by a low internal calcium level. Publication Note: This RefSeq record includes a subset of the publications that are available for this gene. Please see the Entrez Gene record to access additional publications. PRIMARYREFSEQ\_SPAN PRIMARY\_IDENTIFIER PRIMARY\_SPAN COMP 1-2486 AF304464.1 86-2571

**Synonyms:**

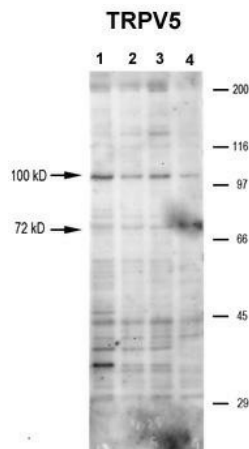
CAT2; ECAC1; OTRPC3

**Note:**

Human: 100%; Pig: 92%; Dog: 85%; Rat: 85%; Mouse: 85%; Bovine: 85%; Guinea pig: 85%; Horse: 77%; Rabbit: 77%

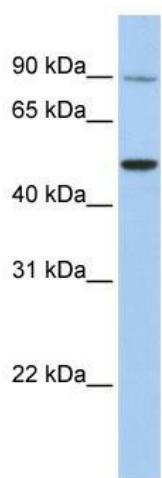
**Protein Families:**

Druggable Genome, Ion Channels: Transient receptor potential, Transmembrane

**Product images:**

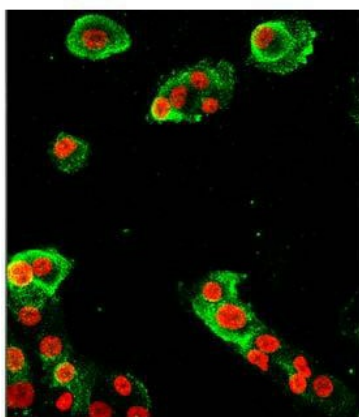
See Immunoblot 2 Data for more information.

Sample Type: 1-4. hRetinal pigment epithelial cells, 4 individual donors (20ug); Primary Dilution: 1:1000; Secondary Antibody: goat anti-rabbit-AP; Secondary Dilution: 1:2000; Image Submitted by: Brian Kennedy; Indiana University Northwest See Customer Fe



WB Suggested Anti-TRPV5 Antibody Titration: 0.2-1 ug/ml; Positive Control: 721\_B cell lysate; TRPV5 is supported by BioGPS gene expression data to be expressed in 721\_B

TRPV5



See Immunohistochemistry 1 Data for more information.

Sample Type: hRetinal pigment epithelial cells;  
Green: primary; Red: nuclear; Primary Dilution: 1:200; Secondary Antibody: goat anti-rabbit-Alexa 488; Secondary Dilution: 1:500; Image Submitted by: Brian Kennedy; Indiana University Northwest  
See Customer