

Product datasheet for **TA331091**

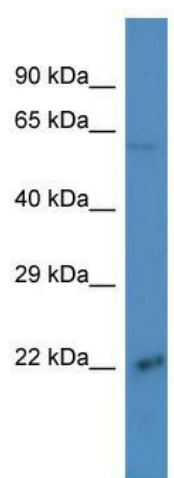
CRTAM Rabbit Polyclonal Antibody

Product data:

Product Type:	Primary Antibodies
Applications:	WB
Recommended Dilution:	WB
Reactivity:	Human
Host:	Rabbit
Isotype:	IgG
Clonality:	Polyclonal
Immunogen:	The immunogen for Anti-CRTAM antibody is: synthetic peptide directed towards the C-terminal region of Human CRTAM. Synthetic peptide located within the following region: DLVTDEETASDALERNLSLSSQDPQPTSTVSVTEDSSTSEIDKEEKEQTT
Formulation:	Liquid. Purified antibody supplied in 1x PBS buffer with 0.09% (w/v) sodium azide and 2% sucrose. <i>Note that this product is shipped as lyophilized powder to China customers.</i>
Purification:	Affinity Purified
Conjugation:	Unconjugated
Storage:	Store at -20°C as received.
Stability:	Stable for 12 months from date of receipt.
Predicted Protein Size:	21 kDa
Gene Name:	cytotoxic and regulatory T-cell molecule
Database Link:	NP_062550 Entrez Gene 56253 Human O95727
Background:	The CRTAM gene is upregulated in CD4-positive and CD8-positive T cells and encodes a type I transmembrane protein with V and C1-like Ig domains.
Synonyms:	CD355
Note:	Human: 100%; Rat: 91%; Pig: 86%; Horse: 85%; Bovine: 85%; Dog: 77%
Protein Families:	Transmembrane



[View online »](#)

Product images:

Host: Rabbit; Target Name: CRTAM; Sample
Tissue: ACHN Whole Cell lysates; Antibody
Dilution: 1.0ug/ml