

Product datasheet for **TA331090**

LRRC8A Rabbit Polyclonal Antibody

Product data:

Product Type:	Primary Antibodies
Applications:	WB
Recommended Dilution:	WB
Reactivity:	Human
Host:	Rabbit
Isotype:	IgG
Clonality:	Polyclonal
Immunogen:	The immunogen for anti-LRRC8A antibody: synthetic peptide directed towards the middle region of human LRRC8A. Synthetic peptide located within the following region: NLTQIELRGNRLECLPVELGECPLLKRSGLVVEEDLFNTLPPEVKERLWR
Formulation:	Liquid. Purified antibody supplied in 1x PBS buffer with 0.09% (w/v) sodium azide and 2% sucrose. <i>Note that this product is shipped as lyophilized powder to China customers.</i>
Purification:	Affinity Purified
Conjugation:	Unconjugated
Storage:	Store at -20°C as received.
Stability:	Stable for 12 months from date of receipt.
Predicted Protein Size:	94 kDa
Gene Name:	leucine-rich repeat containing 8 family member A
Database Link:	NP_062540 Entrez Gene 56262 Human Q8IWT6
Background:	LRRC8A is a protein belonging to the leucine-rich repeat family of proteins, which are involved in diverse biological processes, including cell adhesion, cellular trafficking, and hormone-receptor interactions. LRRC8A is a putative four-pass transmembrane protein that plays a role in B cell development. Defects in this gene cause autosomal dominant non-Bruton type agammaglobulinemia, an immunodeficiency disease resulting from defects in B cell maturation.



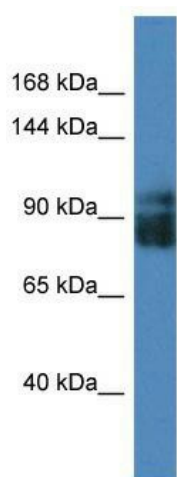
[View online »](#)

Synonyms: AGM5; LRRC8; SWELL1

Note: Dog: 100%; Pig: 100%; Horse: 100%; Human: 100%; Bovine: 100%; Guinea pig: 100%; Rat: 93%;
Mouse: 93%; Zebrafish: 93%; Rabbit: 79%

Protein Families: Transmembrane

Product images:



WB Suggested Anti-LRRC8A Antibody Titration:
0.2-1 ug/ml; ELISA Titer: 1:2500; Positive Control:
HT1080 cell lysate