

Product datasheet for TA331088

ALG1 Rabbit Polyclonal Antibody

Product data:

Product Type:	Primary Antibodies
Applications:	WB
Recommended Dilution:	WB
Reactivity:	Human
Host:	Rabbit
Isotype:	IgG
Clonality:	Polyclonal
Immunogen:	The immunogen for anti-ALG1 antibody: synthetic peptide directed towards the N terminal of human ALG1. Synthetic peptide located within the following region: VVLGDVGRSPRMQYHALSLAMHGFSVTLLGFCNSKPHDELLQNNRIQIVG
Formulation:	Liquid. Purified antibody supplied in 1x PBS buffer with 0.09% (w/v) sodium azide and 2% sucrose. <i>Note that this product is shipped as lyophilized powder to China customers.</i>
Purification:	Affinity Purified
Storage:	Store at -20°C as received.
Stability:	Stable for 12 months from date of receipt.
Predicted Protein Size:	52 kDa
Gene Name:	ALG1, chitobiosyldiphosphodolichol beta-mannosyltransferase
Database Link:	NP_061982 Entrez Gene 56052 Human
Background:	ALG1 catalyzes the first mannosylation step in the biosynthesis of lipid-linked oligosaccharides. Defects in ALG1 are the cause of congenital disorder of glycosylation type 1K (CDG1K).The biosynthesis of lipid-linked oligosaccharides is highly conserved among eukaryotes and is catalyzed by 14 glycosyltransferases in an ordered stepwise manner. Mannosyltransferase I (MT I) catalyzes the first mannosylation step in this process. [supplied by OMIM]. PRIMARYREFSEQ_SPAN PRIMARY_IDENTIFIER PRIMARY_SPAN COMP 1-421 BM767933.1 1-421 422-1179 AY359073.1 416-1173 1180-1444 CA455103.1 259-523 1445-1939 CD366777.1 17-511 c 1940-2122 BC031095.1 1931-2113 2123-2149 BQ002699.1 1-27 c
Synonyms:	CDG1K; hMat-1; HMAT1; HMT-1; HMT1; Mat-1; MT-1



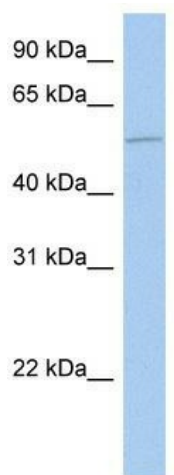
[View online »](#)

Note: Human: 100%; Yeast: 100%; Mouse: 85%; Rat: 79%; Bovine: 79%; Rabbit: 79%

Protein Families: Transmembrane

Protein Pathways: Metabolic pathways, N-Glycan biosynthesis

Product images:



WB Suggested Anti-ALG1 Antibody Titration: 0.2-1 ug/ml; Positive Control: NTERA2 cell lysate