

## Product datasheet for TA331087

### CRLS1 Rabbit Polyclonal Antibody

#### Product data:

Product Type:	Primary Antibodies
Applications:	WB
Recommended Dilution:	WB
Reactivity:	Human
Host:	Rabbit
Isotype:	IgG
Clonality:	Polyclonal
Immunogen:	The immunogen for anti-CRLS1 antibody: synthetic peptide directed towards the middle region of human CRLS1. Synthetic peptide located within the following region: WTIPNMLSMTRIGLAPVLGYLIIIEEDFNIALGVFALAGLTDLLDGFARN
Formulation:	Liquid. Purified antibody supplied in 1x PBS buffer with 0.09% (w/v) sodium azide and 2% sucrose. <i>Note that this product is shipped as lyophilized powder to China customers.</i>
Purification:	Affinity Purified
Conjugation:	Unconjugated
Storage:	Store at -20°C as received.
Stability:	Stable for 12 months from date of receipt.
Predicted Protein Size:	32 kDa
Gene Name:	cardiolipin synthase 1
Database Link:	<a href="#">NP_061968</a> <a href="#">Entrez Gene 54675 Human</a> <a href="#">Q9UJA2</a>
Background:	CRLS1 catalyzes the reversible phosphatidyl group transfer from one phosphatidylglycerol molecule to another to form cardiolipin (CL) (diphosphatidylglycerol) and glycerol.
Synonyms:	C20orf155; CLS; CLS1; dJ967N21.6; GCD10
Note:	Dog: 100%; Pig: 100%; Rat: 100%; Horse: 100%; Human: 100%; Mouse: 100%; Bovine: 100%; Rabbit: 100%; Guinea pig: 100%; Zebrafish: 86%

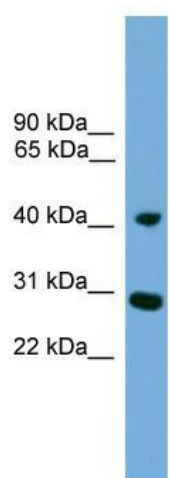


[View online »](#)

Protein Families: Transmembrane

Protein Pathways: Glycerophospholipid metabolism, Metabolic pathways

### Product images:



WB Suggested Anti-CRLS1 Antibody Titration: 0.2-1 ug/ml; Positive Control: Human Muscle