

## Product datasheet for **TA331085**

### NDFIP2 Rabbit Polyclonal Antibody

#### Product data:

Product Type:	Primary Antibodies
Applications:	WB
Recommended Dilution:	WB
Reactivity:	Human
Host:	Rabbit
Isotype:	IgG
Clonality:	Polyclonal
Immunogen:	The immunogen for anti-NDFIP2 antibody: synthetic peptide directed towards the middle region of human NDFIP2. Synthetic peptide located within the following region: SFCITNTIAGRYGAICGFGLSLIKWILIVRFSYFTGYFNGQYWLWWIFL
Formulation:	Liquid. Purified antibody supplied in 1x PBS buffer with 0.09% (w/v) sodium azide and 2% sucrose. <i>Note that this product is shipped as lyophilized powder to China customers.</i>
Purification:	Affinity Purified
Conjugation:	Unconjugated
Storage:	Store at -20°C as received.
Stability:	Stable for 12 months from date of receipt.
Predicted Protein Size:	36 kDa
Gene Name:	Nedd4 family interacting protein 2
Database Link:	<a href="#">NP_061953</a> <a href="#">Entrez Gene 54602 Human</a> <a href="#">Q9NV92</a>
Background:	NDFIP2 activates HECT domain-containing E3 ubiquitin-protein ligases, including ITCH, NEDD4, NEDD4L, SMURF2, WWP1 and WWP2, and consequently modulates the stability of their targets. As a result, NDFIP2 may control many cellular processes. NDFIP2 recruits ITCH, NEDD4 and SMURF2 to endosomal membranes. NDFIP2 may modulate EGFR signaling.
Synonyms:	N4WBP5A

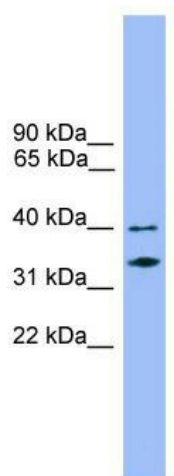


[View online »](#)

**Note:** Dog: 100%; Pig: 100%; Rat: 100%; Horse: 100%; Human: 100%; Mouse: 100%; Bovine: 100%; Rabbit: 100%; Zebrafish: 100%; Guinea pig: 79%

**Protein Families:** Transmembrane

**Product images:**



WB Suggested Anti-NDFIP2 Antibody Titration:  
0.2-1 ug/ml; Positive Control: 721\_B cell lysate