

## Product datasheet for **TA331078**

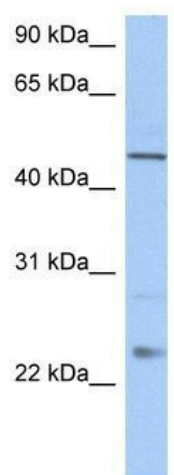
### TMCO1 Rabbit Polyclonal Antibody

#### Product data:

Product Type:	Primary Antibodies
Applications:	WB
Recommended Dilution:	WB
Reactivity:	Human
Host:	Rabbit
Isotype:	IgG
Clonality:	Polyclonal
Immunogen:	The immunogen for anti-TMCO1 antibody: synthetic peptide directed towards the C terminal of human TMCO1. Synthetic peptide located within the following region: CSFIFLYILCTMSIRQNIQKILGLAPSRAATKQAGGFLGPPPPSGKFS
Formulation:	Liquid. Purified antibody supplied in 1x PBS buffer with 0.09% (w/v) sodium azide and 2% sucrose. <i>Note that this product is shipped as lyophilized powder to China customers.</i>
Purification:	Affinity Purified
Conjugation:	Unconjugated
Storage:	Store at -20°C as received.
Stability:	Stable for 12 months from date of receipt.
Predicted Protein Size:	21 kDa
Gene Name:	transmembrane and coiled-coil domains 1
Database Link:	<a href="#">NP_061899</a> <a href="#">Entrez Gene 54499 Human</a> <a href="#">Q9UM00</a>
Background:	TMCO1 belongs to the TMCO1 family. The exact function of TMCO1 remains unknown.
Synonyms:	HP10122; PCIA3; PNAS-136; TMCC4
Note:	Dog: 100%; Pig: 100%; Rat: 100%; Horse: 100%; Human: 100%; Mouse: 100%; Bovine: 100%; Rabbit: 100%; Guinea pig: 100%; Zebrafish: 79%
Protein Families:	Transmembrane



[View online »](#)

**Product images:**

WB Suggested Anti-TMCO1 Antibody Titration:  
0.2-1 ug/ml; Positive Control: Human Liver