

## Product datasheet for **TA331076**

### OTULINL Rabbit Polyclonal Antibody

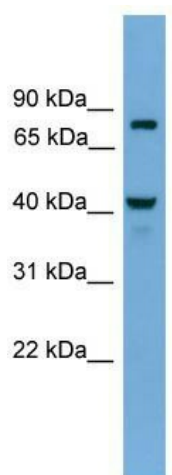
#### Product data:

Product Type:	Primary Antibodies
Applications:	WB
Recommended Dilution:	WB
Reactivity:	Human
Host:	Rabbit
Isotype:	IgG
Clonality:	Polyclonal
Immunogen:	The immunogen for anti-FAM105A antibody: synthetic peptide directed towards the N terminal of human FAM105A. Synthetic peptide located within the following region: HKLKWVIGYLQRKFKRNLVSVEAEVDLLSYCAREWKGETPRNKLMRKAYEE
Formulation:	Liquid. Purified antibody supplied in 1x PBS buffer with 0.09% (w/v) sodium azide and 2% sucrose. <i>Note that this product is shipped as lyophilized powder to China customers.</i>
Purification:	Affinity Purified
Conjugation:	Unconjugated
Storage:	Store at -20°C as received.
Stability:	Stable for 12 months from date of receipt.
Predicted Protein Size:	42 kDa
Gene Name:	family with sequence similarity 105 member A
Database Link:	<a href="#">NP_061891</a> <a href="#">Entrez Gene 54491 Human</a> <a href="#">Q9NUU6</a>
Background:	FAM105A belongs to the FAM105 family. The exact function of FAM105A remains unknown.
Synonyms:	NET20
Note:	Dog: 100%; Pig: 100%; Rat: 100%; Horse: 100%; Human: 100%; Mouse: 100%; Rabbit: 100%; Guinea pig: 100%; Bovine: 93%
Protein Families:	Transmembrane



[View online »](#)

## Product images:



WB Suggested Anti-FAM105A Antibody Titration:  
0.2-1 ug/ml; Positive Control: Human brain