

Product datasheet for **TA331075**

SMCR7L (MIEF1) Rabbit Polyclonal Antibody

Product data:

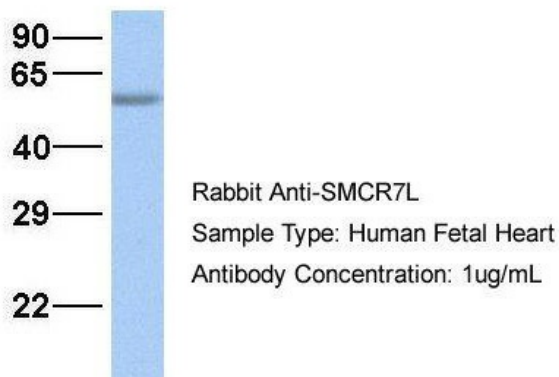
Product Type:	Primary Antibodies
Applications:	WB
Recommended Dilution:	WB
Reactivity:	Human
Host:	Rabbit
Isotype:	IgG
Clonality:	Polyclonal
Immunogen:	The immunogen for anti-SMCR7L antibody: synthetic peptide directed towards the N terminal of human SMCR7L. Synthetic peptide located within the following region: GAAMLGIATLAVKRMVDRAISAPTSPTRLSHSGKRSWEEPNNWGMSPRLLN
Formulation:	Liquid. Purified antibody supplied in 1x PBS buffer with 0.09% (w/v) sodium azide and 2% sucrose. <i>Note that this product is shipped as lyophilized powder to China customers.</i>
Purification:	Affinity Purified
Conjugation:	Unconjugated
Storage:	Store at -20°C as received.
Stability:	Stable for 12 months from date of receipt.
Predicted Protein Size:	51 kDa
Gene Name:	mitochondrial elongation factor 1
Database Link:	NP_061881 Entrez Gene 54471 Human Q9NQG6
Background:	The specific function of this protein remains unknown.
Synonyms:	dj1104E15.3; HSU79252; MID51; SMCR7L
Note:	Dog: 100%; Pig: 100%; Rat: 100%; Horse: 100%; Human: 100%; Mouse: 100%; Bovine: 100%; Rabbit: 100%; Guinea pig: 100%
Protein Families:	Transmembrane



[View online »](#)

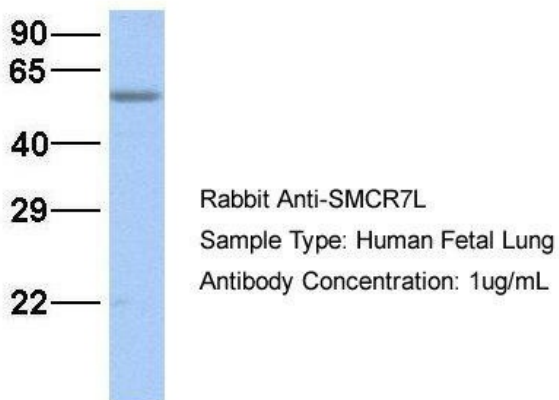
Product images:

SMCR7L

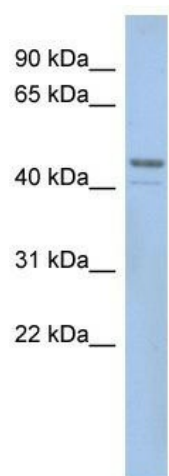


Host: Rabbit; Target Name: SMCR7L; Sample Tissue: Human Fetal Heart; Antibody Dilution: 1.0ug/ml

SMCR7L



Host: Rabbit; Target Name: SMCR7L; Sample Tissue: Human Fetal Lung; Antibody Dilution: 1.0ug/ml



WB Suggested Anti-SMCR7L Antibody Titration: 0.2-1 ug/ml; ELISA Titer: 1:12500; Positive Control: HT1080 cell lysate; SMCR7L is strongly supported by BioGPS gene expression data to be expressed in Human HT1080 cells