

Product datasheet for **TA331074**

YIPF1 Rabbit Polyclonal Antibody

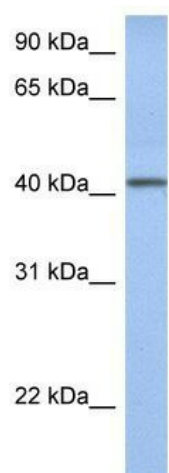
Product data:

Product Type:	Primary Antibodies
Applications:	WB
Recommended Dilution:	WB
Reactivity:	Human
Host:	Rabbit
Isotype:	IgG
Clonality:	Polyclonal
Immunogen:	The immunogen for anti-YIPF1 antibody: synthetic peptide directed towards the middle region of human YIPF1. Synthetic peptide located within the following region: HLGEKTYHYVPEFRKVSIAATIIYAYAWLVPLALWGFLMWRNSKVMNIVS
Formulation:	Liquid. Purified antibody supplied in 1x PBS buffer with 0.09% (w/v) sodium azide and 2% sucrose.
Purification:	Affinity Purified
Conjugation:	Unconjugated
Storage:	Store at -20°C as received.
Stability:	Stable for 12 months from date of receipt.
Predicted Protein Size:	34 kDa
Gene Name:	Yip1 domain family member 1
Database Link:	NP_061855 Entrez Gene 54432 Human Q9Y548
Background:	YIPF1 is a multi-pass membrane protein. It belongs to the YIP1 family. The exact function of YIPF1 remains unknown.
Synonyms:	DJ167A19.1; FinGER1
Note:	Dog: 100%; Pig: 100%; Rat: 100%; Horse: 100%; Human: 100%; Rabbit: 100%; Guinea pig: 100%; Mouse: 93%
Protein Families:	Transmembrane



[View online »](#)

Product images:



WB Suggested Anti-YIPF1 Antibody Titration: 0.2-1 ug/ml; Positive Control: Human Lung